

The Park Press

CELEBRATING 8 YEARS!

APRIL 2015

~ Positive news that matters ~

FREE

Winter Park | Baldwin Park | College Park | Audubon Park | Maitland



Winter Park Paint Out

10



Nature In The Parks

15

REFLECTIONS DERMATOLOGY
For Great Skin At Any Age

Immediate Appointments
407.895.8818
Office of Dr. Palceski

For updated news, events and more, visit www.TheParkPress.com

OCPS To Induct Its First Hall Of Fame Class

The Hall of Fame is a new tradition created by the Orange County Public School Board to honor people who have made a name for themselves and the school district throughout the 145 years since the first school board met in December 1869. The Hall will feature inductees in six categories: distinguished educator, community champion, and alumni in fields of athletics, arts, humanitarian work and distinguished professional careers.

From a lengthy and remarkable list of nominees, the Hall of Fame Selection Committee chose its first members to be inducted May 15, 2015, at the Rosen Shingle Creek Resort. The board of the Foundation for Orange County Public Schools has enthusiastically signed on to be the "founding sponsor" of the OCPS Hall of Fame.

Class of 1966, **Dick Batchelor** graduated from Evans High School. He is a former member of the Florida House of Representatives. He is president of Dick Batchelor Management Group, Inc., specializing in business development, strategic governmental affairs and public policy issues. He has championed two Change for Kids campaigns to support OCPS school construction.



Dick Batchelor



ty of Central Florida. Dunlap was named Miss Florida in 2003 and subsequently crowned Miss America in 2004.

In the Distinguished educator category, **James "Chief" Wilson** taught in OCPS for 40 years at Jones and Evans high schools. With the exception of one semester at Evans High School, Mr. Wilson was a music teacher at Jones High School from 1950 until his retirement in 1990.



Erika Dunlap



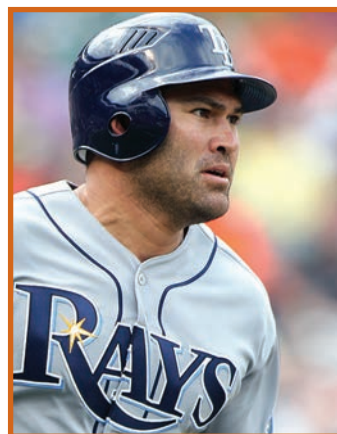
John Young

MEET THE 2015 INDUCTEES:

Class of 1948, **John Young** graduated from Orlando High School. He is a retired American astronaut, naval officer and aviator, test pilot and aeronautical engineer, who

became the ninth person to walk on the moon as commander of the Apollo 16 mission in 1972.

Class of 1992, **Johnny Damon** graduated from Dr. Phillips High School. He has been a professional baseball outfielder who began playing in Major League Baseball (MLB) in 1995 and has two World Series rings.



Johnny Damon

Class of 2000, **Erika Dunlap** graduated from Boone High School and is a graduate of the Universi-



James "Chief" Wilson

Continued on page 12.

YMD EYE & FACE
LASER AND PLASTIC SURGERY
RUTH HILL YEILDING, MD

AREAS OF EXPERTISE

- Laser Eyelid Lift (Laser Blepharoplasty)
- Botox® and Fillers Injected by Dr. Yeilding
- Board-certified Ophthalmologist
- Fellowship trained in Oculoplastic and Facial Plastic Surgery

To find out more, visit www.YeildingMD.com

LASER LID LIFT & VOLUMA™ FOR CHEEKS

328 W. Morse Blvd. • Winter Park, FL 32789 • 855.YMD.FACE (963.3223) • www.YeildingMD.com

INSIDE THE PARK PRESS

Editor's Message.....3	In The Garden 17
News4	The Educated Palate 18
Health 12	Arts & Entertainment 19
Business 14	Schools..... 20
Real Estate 16	Calendar of Events 23

PERMIT NO 4595
 WEST PALM BCH FL
PAID
 US POSTAGE
 PRSRT STD

The Park Press™

www.theparkpress.com

PUBLISHER RICK CABLE
rick@theparkpress.com

EDITOR TRICIA CABLE
tricia@theparkpress.com

ART DIRECTOR JILL SHARGAA

ADVERTISING SALES JAN CHALHOUB
jan@theparkpress.com
advertising@theparkpress.com

EDITORIAL CONTRIBUTIONS AND WRITERS

Janna McGowan, John Gill,
George McGowan, Barbara Solomon,
Scott Richardson, Stephen and Kristin Pategas,
Ayesha G. Bullock, M.A., Scott Hillman

PHOTOGRAPHY Steve Graffham, Tricia Cable,
Scott Richardson

The Park Press, LLC, Winter Park, Florida
Office: 407-644-6760
E-mail: info@TheParkPress.com

VISIT US ON THE WEB www.TheParkPress.com

QUESTIONS OR COMMENTS?

We want to hear from you! Send your submissions to *The Park Press* via e-mail at editor@TheParkPress.com. All submissions to *The Park Press* become the property of this publication and will not be returned; they may be edited and published or otherwise used in any medium.

RECEIVE YOUR COPY OF *The Park Press* EACH MONTH BY MAIL

The Park Press is free at various retail locations each month throughout the community. If you're not currently receiving our publication by mail, but would like to, please email your name and address to subscriptions@theparkpress.com. The 12 month subscription cost is \$15. For more information please call, or email our staff today. Please allow 4-6 weeks for your first mailed issue to arrive.

THE PARK PRESS IS PUBLISHED MONTHLY. ALL CONTENTS, LOGOS, AND ARTICLES ARE COPYRIGHTED MATERIALS AND ALL RIGHTS ARE RESERVED. ANY REPRODUCTION IN WHOLE OR IN PART WITHOUT PRIOR WRITTEN PERMISSION OF THE PARK PRESS IS STRICTLY PROHIBITED. THE PARK PRESS RESERVES THE RIGHT TO REFUSE ANY ADVERTISING MATERIAL FOR ANY REASON DEEMED INAPPROPRIATE BY THE PUBLISHER. ©2015 THE PARK PRESS, LLC

Publisher's Message



Rick Cable

With this issue I'm thrilled to share that *The Park Press* is celebrating our 8th anniversary! As I stop to reflect, I find myself feeling blessed and honored by the role we play within our community. We have remained steadfast to focusing on "the positive news that matters" and we greatly appreciate your loyal readership and following.

Sure, I started this venture, but it has always been a team/family effort.

First, I cannot express how grateful we are to our advertisers! It all started with a cold call to John Psomas and Jim Ackerman at State Farm in Baldwin Park. They were seriously my first call to sell an ad in the April 2007 issue of *The Park Press*. They signed on and have been in every issue since! Several others such as Florida Hospital, Mayflower Retirement, Dr. Danna with Physician Associates, and Waterstone Mortgage (they've changed names a few times) have been running for over seven and a half years. All of the advertisers within each issue are key members to the Park Press family, and I'm honored that we are an important part of their marketing strategy and a valued member of their team. I encourage

you to consider doing business with or referring our advertiser's products and services to your neighbors, family, and friends whenever possible.

Second, I believe our team rivals some of the most talented individuals you would find in any publication. From our elected officials, featured writers, proofers, art director, and sales, I feel humbled by their passion and dedication that they have for our publication.

Third, while we have remained quite consistent over the years we continue to grow, so I'm happy to share that with this issue we have three new featured writers in our family. Winter Park Mayor Steve Leary, Jim Hasley with a new business column titled Critical Mass, and the talented photographer Richard Johnson with Nature In The Parks.

In closing, David Ciambella makes his return after a little break with Family Business Perspective. Welcome back Mr. Ciambella!

As always, thank you for reading *The Park Press* and we look forward to the great things to come.

Rick

Rick Cable
Founder/Owner

OUR PUBLICATION IS
MADE POSSIBLE IN OUR
COMMUNITY BECAUSE
OF THE SUPPORT OF
OUR ADVERTISERS.

WE THANK THEM FOR
SUPPORTING US AND
ASK THAT YOU PLEASE
KINDLY GIVE THEIR
PRODUCTS OR SERVICES
CONSIDERATION FOR
YOUR BUSINESS.

 Like us on
Facebook

Jeannette Genius McKean Memorial 5k



*Run
for the
Trees*

April 25, 2015

Start at Showalter Field and finish on Genius Drive



Parks & Recreation
department



All participants receive a young tree!

"Running this race
brings back great
memories of when
Genius Drive was
open and my mom
and I used to walk to
see the peacocks."

~ Lori, Winter Park

     **Run to TrackShack.com**

1104 N. Mills Ave. | Orlando, FL 32803 | 407.898.1313

JULIE KEATEN-REED
SOLO EXHIBITION OF ORIGINAL
SUMI INK & WATERCOLOR PAINTINGS



MARYANN STELTENKAMP
407.406.0449

126 PARK AVENUE SOUTH | WINTER PARK
UPSTAIRS NEAR BARNIES COFFEE

Animal House! By Tricia Cable

Those of you who know me, know that I am a sucker for animals of any kind. Recently over a big Bud Light and nice cold vodka- soda-lime, I nearly had my husband convinced to let me foster a pregnant hound dog in an attempt to get her out of a high-kill shelter and give her a safe place to have her babies. I was halfway through displacing my youngest child out of her bedroom when fortunately I received a message saying that someone else had stepped up and she was going to have a nice quiet place to call home for a while.

Funny enough, it's not like we have the room or the time for that matter with my work and travel schedule. But I would have made it happen if I set my mind to it. And, it seems my girls are following in my foot steps as the above mentioned youngest child was ready to bunk with her sister and turn her newly-redecorated room into a birthing center for an adorable tri-colored hound.

Which is why this month, I have decided to donate my space in this issue of *The Park Press* to a rescue organization that has become very near and dear to my heart. Ruff Rescue of Central Florida is promoting their very first online auction. This organization and family of individuals dedicate their lives to rescuing dogs from the most horrific circumstances, giving them a loving environment to recover in and then finding them simply the most perfect forever homes. This network of incredible people are true match makers and match.com could learn a few things from them when it comes to introducing the right dogs to the right humans. Please find the details of their online auction below

and consider making a bid.

Ready...Set...**BID!**

What do an autographed football, indoor skydiving, and freshly roasted coffee have in common?

Answer: RUFF Rescue of Central Florida's Online Auction!

Come join the bidding from April 1st through April 15th and be part of the miracle that transforms an unwanted dog sitting on death row in a Florida kill shelter to a happy, playful, wanted, and loved family member. All you need to do is visit www.biddingowl.com/rrocfl, click, and bid during RUFF Rescue of Central Florida's Online Auction.

Are you a golf enthusiast? How does a private behind-the-scenes tour for you and three guests at the Golf Channel Studios in Orlando sound? You'll watch a live broadcast of one of their shows, as well as try your golf swing on their PGA Tour Simulator. Your tour will end with a special souvenir to remember this once-in-a-lifetime experience. Prefer to spend a morning or afternoon in the Florida sunshine? Place your bid for a round of golf for four at Palisades Country Club in Clermont.

If you love adventure, here's a chance to win an airboat ride and wildlife park tour, or a swamp safari and eco tour. How does a Segway tour around Mount Dora, or a walking food tour of Winter Park sound?

Experience the world of fitness with a membership to WinStrong Crossfit Windermere or 9Round Fitness & Kickboxing in Ocoee, or stock your closet with some new workout clothing from Be Fit Apparel in Orlando.

Are you a coffee connoisseur? Experience the freshly roasted and ground coffee from Golden Hills Coffee Roasters in Groveland. Try the best pizza in Central Florida at Stromboli's NY Pizzeria - Windermere, or shop at the ever-popular Publix Supermarket.

Be a kid again by spending the day at Walt Disney World, SeaWorld, or Aquatica. From the excitement of an indoor skydiving experience to solving a crime CSI-style to a private wine tasting party, there is something for everyone with over 45 auction items up for bid.

The biggest bonus of all, your participation supports the mission of RUFF Rescue of Central Florida - to save unwanted dogs sitting on death row in Florida kill shelters, and giving them a chance to become the newest member of a loving, forever family.

So come, bid, and help us spread the word about our first online auction! Encourage your friends and family to participate, and share information about our auction on your social media sites such as Facebook, Twitter, Pinterest, and other resources you may have.

Auction begins April 1st at 9:00 a.m. and end April 15th at 9:00 p.m. For more information about RUFF Rescue of Central Florida visit our website at www.rrocfl.org, or our Facebook page at www.facebook.com/rrocfl.

Happy Bidding!

Great rates on Vehicle Loans.



Let State Farm Bank® put you in the driver's seat for less money.

From cars to trucks; motorcycles to RVs, let State Farm Bank® finance or refinance all the things that move you. **Bank with a good neighbor®.**

CALL AN AGENT FOR MORE INFORMATION OR VISIT US ONLINE TODAY.



John Psomas

922 Lake Baldwin Lane, Suite A
Orlando, FL 32814
Bus: 407-277-2997 Fax: 407-277-3682
www.johnpsomas.com



James E Ackerman

922 Lake Baldwin Lane, Suite A
Orlando, FL 32814
Bus: 407-277-2994 Fax: 407-277-3682
www.jimackerman.net



THE WHITE WALL GALLERY

PROUDLY WELCOMES



ROB REEDY: THREE

MARCH 26 - JUNE 30, 2015

IN THE SCAN DESIGN BUILDING
999 Douglas Ave • Suite 1123 • Altamonte Springs, FL 32714

TheWhiteWall.com 407.682.5343



City Commissioner's Message

Commissioner Robert F. Stuart, City of Orlando District 3



Robert F. Stuart

April is a great time to live in Orlando! There are so many things to do, see, and experience this month. First, let me just cover a little business before we get to the fun stuff.

As I looked back on April articles from past years, it was interesting to note that in 2010,

I shared information from Florida Department of Transportation District 5 Secretary Noranne Downs' SunRail presentation. Then in 2012, I passed along information from the mayor's State of the City Address, which included information about the SunRail groundbreaking ceremony. Then last year, we celebrated operation officially beginning on May 1st. Now here we are almost a year later, and transportation is still a hot topic, now with the I-4 Ultimate Project gearing up and settling in for a long stay in our city (expected completion date is 2021).

While this project is completely under the jurisdiction of the Florida Department of Transportation, we want to make sure our residents have the most up-to-date information. Two major shifts in traffic patterns that will affect motorists in the very near future include the permanent closures of the South Street entrance ramp onto eastbound I-4 and the exit ramp from eastbound I-4 to Ivanhoe Boulevard.

As major construction activities begin to accelerate, drivers should expect to see temporary roadways, bridges and ramps, and continued traffic pattern changes and shifts. Lane closures will be limited to mostly nighttime hours, beginning as early as 8:30 p.m. and continuing as late as 7 a.m. Work may also

require ramp closures for extended periods. Please check out i4ultimate.com for up to date information or to sign up to receive text or e-mail alerts when work will be commencing in your area.

Now on to the fun stuff as April is just a great time to enjoy all that our city has to offer.

On Saturday April 11th, Leu Gardens (leugardens.org) will host their annual Jazz and Blues Stroll beginning at 7 p.m. Then on April 12th, enjoy free admission to the Menello Museum (mennellomuseum.com) along with unique kids' crafts and activities.

Lake Eola is a busy place in April! On both April 11th and 12th is the annual Spring Fiesta in the Park at Lake Eola. This year's event once again showcases wonderful arts and crafts, great eats, and a fun kids' zone. Visit fiestainthepark.com for more details.

Then on April 16th, the Annual IOA Corporate 5K evening race will be taking place around Lake Eola. This great annual event will benefit local charities such as the Parramore Kidz Zone and the Christian Service Center. For more information about how to sign up for this evening of fun and fitness, visit The Track Shack's website, trackshack.com.

April also brings evening movies back to Lake Eola. Enjoy an evening of fun family entertainment on the green on Saturday, April 25th. Activities begin at 6:30 p.m. and the movie starts at 8:30 p.m.

Also on April 25th is the Fifth Annual Kidfest in the Audubon Park Garden District. This one-of-a-



Downtown Orlando's Lake Eola will host Spring Fiesta in the Park on April 11-12. The event features arts and crafts, food and fun kids' zone.

kind event gives kids (of all ages) a chance to learn what goes into running the many different businesses in the neighborhood. Do family yoga, learn organic gardening, make mini pizzas, and much more. Visit apgardens.com for more information.

Finally, if you want to learn more about our great city, please join Mayor Dyer for his annual State of the City address. This year it is taking place at the Dr. Phillips Center for the Performing Arts on Wednesday, April 29th at 10:30 a.m. Visit cityoforlando.net/soc for more information.

I appreciate all that our citizens do collectively to help our community to flourish. Thank you for your continued support and I look forward to seeing you around the district this spring.

ROBERT F. STUART | COMMISSIONER, DISTRICT 3, CITY OF ORLANDO
| 400 S. ORANGE AVENUE, ORLANDO, FL 32801 | 407-246-2003 |
ROBERT.STUART@CITYOFORLANDO.NET

30th Annual **Taste** OF WINTER PARK
A WINTER PARK CHAMBER EVENT

WINTER PARK'S ULTIMATE FOODIE FESTIVAL
WEDNESDAY, APRIL 15, 2015 FROM 5-8PM

Winter Park Farmers' Market

PRESENTED BY
 CenturyLink™

Featuring unlimited food and beverage samples from 40 top chefs, bakers, caterers, confectioners and beverage purveyors.

Tickets and information at www.winterpark.org or call 407-644-8281

THE WINTER PARK **Paint Out**
A CENTRAL FLORIDA PLEIN AIR FESTIVAL

April 19-25, 2015

25 nationally acclaimed artists recreating iconic area scenes in acrylics, watercolors, oils & pastels

JOIN US FOR A WEEK FILLED WITH EVENTS

FREE ARTISTS' DEMOS
PAINTINGS AVAILABLE FOR PURCHASE ALL WEEK

On Saturday mingle with the artists at **The Garden Party** (purchase tickets online or call)

407-647-6294
www.WinterParkPaintOut.org



Winter Park Mayor's Message

Mayor Steve Leary



Steve Leary

I am honored to serve as the 54th mayor of Winter Park. I am also proud to follow in the footsteps of our distinguished past mayors and humbled to have been elected by the residents of Winter Park. Running a mayoral campaign was an exciting challenge that brought me closer to my family, my neighbors and my city. I am so appreciative of the support, love and care shown to all of us during this election season.

For me, this election and my service as mayor, was and will continue to be about the future of Winter Park for generations to come. As a father, I see it as a community's responsibility to work together to ensure that Winter Park maintains its status as the

best place to live, work, and play. This can be done by protecting and preserving the things that give Winter Park its unique character while also recognizing how regional growth is impacting us.

Mayor Ken Bradley, whom I deeply respect and thank for his six years of service, always referred to Winter Park as an oasis and not an island. The visioning process that we are embarking on will help us maintain the oasis that we all treasure and enjoy. At a recent City Commission meeting we appointed the members of the Visioning Steering Committee who will:

- Oversee the work of the consultant selected to lead the city through the visioning process
- Review and comment on all work products prior to public presentation
- Coordinate citywide community meetings and input

- Formally present the final visioning report to the City Commission

This visioning process will help our city continue to move forward in a meaningful, intentional and positive direction that preserves, protects, and enhances the quality of life we all love and enjoy.

Thank you for your continued faith, trust and support during my past four years as your commissioner and vice mayor. I want to also congratulate Greg Seidel on his election to the Commission. I look forward to working with my fellow Commission members and the entire community, in my new role as mayor, as we make important decisions that truly make Winter Park the best city to live work and play for today's residents and future generations.

Sincerely,
Mayor Steve Leary



Maitland Mayor's Message

Mayor Howard A. Schieferdecker



Howard A. Schieferdecker

Congratulations To The Volunteers Of The Year

Two individuals were recognized for their service on the City's resident boards. Mr. David S. O'Connor received the 2014 Volunteer of the Year Award for his 15-year service on the Police Officers & Firefighters Pension Trust Fund Board. Mr. O'Connor recently earned his Certified Public Pension Trustee

certification, the highest distinction offered by the Florida Public Pension Trustees Association. Mr. Michael Dabby, the second recipient, was recognized for his work on the Planning & Zoning Commission and Transportation Advisory Board. He also has served on the Board of Zoning Adjustment, Maitland Ad Hoc Off-Street Parking Committee, and the Lake Avenue Widening Ad Hoc Committee.

From left to right: Mr. David S. O'Connor, Mayor Howard A. Schieferdecker, and Mr. Michael Dabby.



Now Taking Reservations for ACTIVE SENIOR LIVING IN BALDWIN PARK.



Here's what you may know:

Baldwin Park is a stylish, vibrant, upcoming neighborhood

- Just one mile from Winter Park and three miles from downtown Orlando
- Includes 1,100 acres of parks, lakes, lush landscaping and beautiful homes
- Features inviting shops, restaurants, movie theaters, colleges and more
- Miles of pet-friendly paths and trails for biking and walking with everything you need within easy reach

Here's what you may not know:

Welcome home to Westminster Baldwin Park, a neighborhood of Westminster Winter Park

- Spacious, well-appointed apartment homes with stunning views of Lake Baldwin
- Lifestyle amenities and services such as casual dining café, heated outdoor swimming pool and state-of-the-art fitness center
- Maintenance-free living, including housekeeping and maintenance
- Full access to the Westminster Winter Park campus, with its abundant amenities, lifelong learning opportunities and assurance of access to a continuum of healthcare services
- Part of Westminster Communities of Florida, a financially strong, faith-based, not-for-profit family of 19 senior living organizations

Call the Westminster Baldwin Park Marketing Welcome Center today!
407-502-6240



A Neighborhood of Westminster Winter Park





County Commissioner's Message

Commissioner Ted B. Edwards, Orange County, District 5



Ted B. Edwards

Every day, Orange County works tirelessly to keep the spread of invasive plant species at bay. Many of the species can cause great harm for native plant and animal life. Proliferation of these invasive plants leads to a loss of biodiversity, disrupts the environment, and alters long-standing ecological processes vital for the survival of native and unique flora and fauna. They have few natural predators and can often grow wildly without native insects or diseases to keep them in check. These species have a very real cost to taxpayers. According to the University of Florida, the state spent over \$80 million dollars a year to control both aquatic and terrestrial invasive plant species.

Over 75 non-native invasive terrestrial plant species now call Central Florida home. Common examples of these plants include the Brazilian pepper, air potatoes, Chinese tallow, Australian pines, Japanese honeysuckle, swamp morning-glory, and old-world climbing fern. Many of these species were brought to Florida intentionally for decorative uses. The Brazilian pepper, for instance, was documented to have been brought to Florida for use as an ornamental tree as early as the 1840s. Since then, this species has spread across the state, with over 700,000 acres infested with this plant. Its dense foliage blocks sunlight from reaching many native plants and its bright red seeds are readily spread by birds. In addition, the Brazilian pepper produces certain allelopathic agents which appear to suppress the growth of other plants.

Orange County's Environmental Protection Division is actively working to control the spread of non-na-

tive invasive species. County staff conducts surveys of county-owned green places each spring and fall. Any invasive species are logged into a computerized mapping system. Orange County staff treats small infestations in-house. The county generally hires outside contractors to remove larger infestations. Funding for much of this work comes from the Florida Fish and Wildlife Commission's Upland Plant Management Program. This program aids local governments in removing invasive plants from public conservation lands. The county controls invasive plants through pesticide sprayings; manual removal of plants, fruits, and seeds; and by organizing public events such as the Air Potato Raid in which volunteers join with Environmental Protection Division Staff to find and dispose of air potatoes.

You too can help stop the spread of non-native invasive plant species. Follow Florida-friendly landscaping guidelines to ensure your ornamental lawn plants do not inadvertently spread to nearby parks or environmental lands. A listing of local invasive plants is available online from the University of Florida Institute of Food and Agricultural Sciences to help you identify these problem plants. If a non-native invasive plant is spotted on your property, you may remove it safely as long as you take precautions. Carefully dispose of trimmed material from invasive plants, especially material with attached seeds or spores. If removing a spore-based invasive species such as ferns, be sure to remove all plant material from your shoes and immediately wash your clothing to prevent spores from spreading. If the invasive plant is a low-growing bush or vine, pull up the plant completely by its roots. Herbicides may also be applied to certain species until the

leaves are wet. Several herbicidal treatments will be necessary.

Orange County is committed to keeping our parks and environmental lands as pristine and as beautiful as possible. If you have any questions about the county's role in non-native invasive species removal, upcoming

environmental volunteer events, or any other county issue, please do not hesitate to contact me or my staff, Edgar Robinson and Lynette Rummel. We can be reached at 407-836-7350 or by email and district5@ocfl.net.

Ted B. Edwards





DERBY
20 DAY 15
PRESENTED BY
LOYAL SOURCE GOVERNMENT SERVICES

SATURDAY, MAY 2nd

Hosted by: **ember**

42 West Central Avenue, Orlando, FL 32801

Join us for the 8th annual Derby Day!
Doors open at 3:30pm

While you wait for the 2 most exciting minutes in sports, our entertainment onsite includes a exciting fun-filled day of hats, open bars, mint juleps, raffle prizes, exciting auction items, a great buffet, and rooting for your favorite horse on large screen TVs.

All proceeds will be donated to the UCF Center for Autism and Related Disabilities to provide programs and summer camps for children with autism.

Find tickets and sponsorship info at
derbydayorlando2015.wordpress.com

Winter Park Recovery Center

Comprehensive Drug & Alcohol Treatment
Naltrexone For Alcohol & Cocaine Abuse
Suboxone For Heroin & Opiate Pill Abuse
Vivitrol For Opioid & Alcohol Abuse
Chantix For Smoking Cessation
Regular & Intensive Outpatient

Privacy and Confidentiality Assured

Doctor Supervised Protocols In A Medically Managed
Dual Diagnosis Format That Is Integrated With
Therapy, Acupuncture, Hypnotherapy,
Massage, Nutrition and Exercise

2056 Aloma Ave, Suite 100, Winter Park, FL 32792
For Free Assessment - Call 407-629-0413
www.WinterParkRecoveryCenter.com



Protection And Service The Winter Park Police Department

Place A Call, Make A Difference

The Winter Park Police Department works for all its residents and community stakeholders to have the safest experience possible as they live, conduct business, and play in our community. For the past several weeks, Winter Park and the surrounding cities have experienced several daytime residential burglaries. Although property crimes are of concern at this time, violent crime remains low in Winter Park and we continue to be one of the safest communities in Central Florida.

Many of the recent daytime residential burglaries involve the suspects knocking or ringing the front door bell to determine if the residence is occupied. If there is no answer, the suspects walk around the residence to find an unsecured gate and make entry into the backyard of the residence. Once in the back of the residence, the suspects will utilize any available object to break the glass to either the sliding door or French doors. Items such as jewelry, high-end electronics, and high-end purses are commonly stolen. In some cases firearms have been stolen and even vehicles, when keys are left out for easy taking. These individuals have been known to use look-outs and will dress appropriately for the neighborhood in attempts to avoid looking out of place.

The following are some examples of residents who PLACED A CALL and MADE A DIFFERENCE:

A neighbor noticed a suspicious van backed into a driveway just after seeing the resident leave the house. The vigilant neighbor called the police and three suspects who were committing a burglary were arrested. In another incident a neighbor called the police department and provided a good suspect description and suspect vehicle tag after seeing the suspect back his vehicle into a neighbor's driveway. This lead was invaluable and provided our criminal investigation division with a possible identity for the suspect.

You are our EYES and EARS in the neighborhood and without your support we may not have been able to apprehend and arrest the suspects in these cases. YOU help us to make this the safest city in Central Florida. We encourage everyone to PLACE THE CALL and MAKE A DIFFERENCE when you see any suspicious activity in their neighborhoods or businesses.

- Call 911 immediately should you see anything suspicious in your area. Unfortunately, there have been several incidents where neighbors have seen something out of place and have not called.

- DO NOT APPROACH any vehicles or suspects but be prepared to provide detailed information to the

911 operator. Dispatchers will be sharing information in real time with responding officers. Helpful information you may be able to provide would include vehicle descriptions, license plate numbers, and the number of suspects with a detailed description of their clothing, appearance, and direction of travel.

The Winter Park Police Department encourages everyone to secure their homes and vehicles, even if you will be gone for "just a few minutes." Never leave any valuables in plain view within your vehicle. Utilize any alarm systems and do not leave your garage doors open when you are not around. Should you regularly store valuables in your home, consider using a safety deposit box or large safe that cannot be easily moved.

The Winter Park Police Department provides security surveys for your Winter Park home or business free of charge. Security surveys are an invaluable resource for determining areas of improvement in your home's security. Your location is examined and analyzed for potential weaknesses that may increase your risk for victimization, to include landscaping, lighting, locks, doors, and windows. Security surveys are conducted by Crime Prevention Practitioners who have received extensive training through the Florida Attorney General's Office



and all information is strictly confidential.

We have partnered with Smart Water CSI, LLC, a cutting-edge technological company with a track record of crime deterrence and theft reduction in the United Kingdom, with North American corporate headquarters in Fort Lauderdale. Smart Water is a water-based, clear solution which is brushed or sprayed onto property and dries to be completely invisible. Each bottle contains a unique forensic formula and PIN which is logged into a secure database so recovered property can be traced back to the rightful owner. Please visit www.smartwatercsi.com to see the latest video and updated information.

The Winter Park Police Department is offering the Smart Water product free of charge to all Winter Park residents and business owners when you sign up for a security survey. If you are interested in having a security survey completed on your home or business, please visit our website at www.wppd.org and click on the Smart Water icon to register. Surveys are conducted by appointment only.

CE 9998909 MM33264

MESSAGE LUXE

FACE LUXE

\$38

1 HOUR MESSAGE

Consists of 50-minute standard massage and time for consultation. New clients only. See spa for details.

\$48

LuXe Facial

Consists of 50-minute standard facial and time for consultation. New clients only. See spa for details.

\$78

MICRODERMABRASION, 4-LAYER FACIAL, BIOLIGHT FACIAL, or VC5 FACIAL

Choose one facial. Consists of 50-minute session and time for consultation. New clients only. See spa for details.

CALL NOW

407-740-LUXE

5 8 9 3

2217 Aloma Ave.
Winter Park, FL 32792
Aloma Shopping Center,
between First Watch and Publix

World Champs!

Congratulations to the Winter Park High School Cheerleading Team for achieving the highest level of accomplishment in their sport. The cheerleaders took first place in all of their competitions this year. For the first time in the history of this storied program, the team won the Metro Conference Championship, the State Regional Championship, the State Championship, the National Championship, and the World Championship! The Wildcat cheerleaders are a dedicated, hardworking group of girls, and they are outstanding in their athleticism, team work, character, and representation of Winter Park High School. Congratulations to Head Coach Angela Austin, her coaching staff, and the Wildcat cheerleaders on their elite achievements! Winter Park High School is extremely proud of this stellar team who has made history. Go Cats!



Top row: Meghann Vick, Jayssa Cayo, Maegan Feeser, Brittney Strait, Hailey Adams, Lizzie Hunpatin, Walker Legler. Middle row: Monique Dyer, Paige Stafne, Rebecca Klawter, Alexa Ben-Zeev, Bailey Cain, Kyra Ashcraft. Front row: Morgan Vick, Cristina Christy, Ally Rose, Serena LeMand. Photo by Kon Studio.

Annual Spring Cleanup For Winter Park Residents

It's that time of year again! Now is the time for spring cleaning and the City of Winter Park encourages residents to participate in the city's annual Spring Cleanup.

The annual Spring Cleanup provides an extra "bonus" pickup day so that residents can dispose of old furniture, broken appliances, and other bulky items. To take advantage of this convenient service, residents must place their items curbside after 5 p.m. on the evening prior to their second regularly scheduled pickup day.

CUSTOMER LOCATION	ASSIGNED PICKUP DAY
North of Fairbanks/ Aloma Ave.	Thursday, May 7, or Friday, May 8
South of Fairbanks/ Aloma Ave.	Thursday, May 14, or Friday, May 15

PLEASE NOTE:

- Hazardous waste, electronics and yard waste are NOT included in the Spring Cleanup.
- If you live in an apartment, townhome or condo that does not provide curbside service, please contact Waste Pro directly for a large item pickup. (Fees may apply.)

For more information regarding Winter Park's annual Spring Cleanup, please contact Utility Billing Customer Service at 407-599-3220 or Waste Pro at 407-774-0800.



The Plaza Hannibal Square

Apartments in Downtown Winter Park
* Call for availability

Anne (407) 808-0798

amillians-roche@owens-services.com



In' Town Apartments

1 and 2 Bedrooms Available

\$1,300-\$1,700

444 W. New England Ave. / 362 S. Pennsylvania Ave

jazz'n blues stroll

at Harry P. Leu Gardens

SATURDAY, APRIL 11
7-10 P.M.





Enjoy a romantic evening of live jazz and blues under a starry sky inside Leu Gardens' 50-acre botanic oasis.

Pack a dinner picnic and your favorite drinks, alcohol is permitted. Bring seating, chairs or blanket, and stroll the beautiful gardens under the moonlight.

Se7en Bites and Jazzy Java will be selling delicious desserts and coffee.

Lauren Mitchell Band

Nightly Blues Band

Don Soledad Trio

For more info and to purchase tickets, visit leugardens.org

Harry P. Leu Gardens

1920 North Forest Ave.
Orlando, FL 32803
407.246.2620
leugardens.org

CITY OF ORLANDO



Sponsored in part by the State of Florida, Department of State, Division of Cultural Affairs and the Florida Council on Arts and Culture.



**ORLANDO'S FAMOUS
FURNITURE
OUTLET
ACROSS FROM
WINTER PARK
VILLAGE**

ISN'T GONE!



We have MOVED!

VISIT OUR NEW HUGE WORLD OF DECOR 1/4 MILLION SQ FT FACILITY NEAR OBT & CFL PKWY
OPEN TO THE PUBLIC MON-FRI 9^{am}-4^{pm}

DON'T MISS OUR POPULAR SUPER SAVINGS EVENTS

World of Decor
AUCTION

1 DAY PRE-EASTER SALE

APR 4
Sat 1^{pm}

2-DAY SPRING SALE

APR 18&19
Sat & Sun 1^{pm}

Attention Customers, While We Realize
the Auction Format is Not for Everyone.

We Guarantee

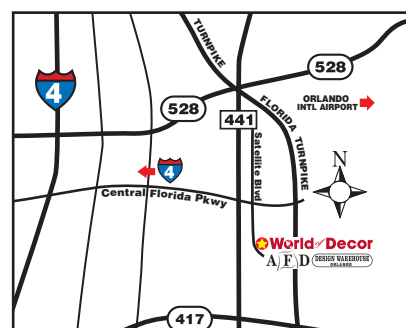
those who Embrace this Sales Channel...

WILL GET MORE for their Money!

**YOU OWE IT TO YOURSELF
TO COME AND SEE.**

World of Decor
NEAR OBT & CFL PKWY
11423 Satellite Blvd.
Orlando, FL 32837 • 407-816-7055
worldofdecor.com

facebook.com/worldofdecorauctions



Auction Business License #287, Sabrina Euse Auctioneer #4029, Darren Euse Auctioneer #4555, Chad Evans Auctioneer #8832, Chris Amerson Auctioneer #8820, 12.5% Buyers Premium. All announcements made at the sale take precedence over all previous announcements. Photos represent a sampling of the types of product to be sold.

Wet Paint, Great Art – Winter Park Paint Out 2015

Brushes, paints, canvas, easels, and 25 of the finest plein air artists in the nation. The Winter Park Paint Out is back for the seventh year in a row and it's bigger and more colorful as artists paint scenes in Winter Park and Orlando, capturing moments in time with the splash of oils, watercolors and pastels, from April 19-25.

The Albin Polasek Museum & Sculpture Gardens will host the Paint Out. Stop by the museum and gardens from April 19-25 to see both artists' works in progress and recently completed works, watch artists painting in the gardens, and attend free painting demonstrations. En plein air, a French term meaning "in the open air," describes artworks painted outdoors with the subject directly in view, rather than being created in a studio. Plein air artists capture the spirit and essence of a landscape or subject by incorporating natural light, color and movement into their works. Artwork produced during the Paint Out will be

for sale, with a portion of the proceeds going to support the preservation, maintenance and operation of the museum and gardens.

The Paint Out culminates with a special evening event - The Paint Out Garden Party, which takes place Saturday April 25, from 6 to 9 p.m. All artists will be present, and guests are able to discuss and purchase their works. Tickets for The Paint Out Garden Party are available through the Polasek Museum. They are priced at \$50 in advance, or \$80 at the door (if available). Space is limited, and the event has sold out each year. Be sure to purchase your tickets soon and save the date.

Call the museum at (407) 647-6294 for additional information or visit the Paint Out web site at www.winterparkpaintout.org for a complete schedule of events. A rewards program is also available for patrons and sponsors. Please visit the website for more information on how to participate as well as for details on how to follow the event on Facebook and Twitter.

Artists paint in the Polasek's sculpture gardens and at other locations throughout Winter Park and Orlando. Works will be on display and for sale as soon as they are completed and dropped off at the museum's "wet room." Stop by to see and purchase works produced during this year's Winter Park Paint Out! All artwork may also be viewed virtually in "real time" online as they are created at www.winterparkpaintout.org.

Free Painting Demonstrations

SUNDAY, APRIL 19: NOON - 3 P.M.

"Lyrical Painting" and live music at the Casa Oil Painting Demonstration with Hai-Ou Hou at Casa Feliz, 12:30 p.m. - 2:30 p.m. Casa Feliz is located at 656 North Park Avenue, Winter Park, FL 32789

SUNDAY, APRIL 19: 1:00 - 4:00 P.M.

"Plein Air 101" and free Museum Open-House Oil Painting Demonstration with Christophe Cardot, 2 p.m. - 4 p.m. The demonstration will be held onsite in the Polasek Museum's Lakeview Garden.

MONDAY, APRIL 20: 10 A.M. - NOON

"From Start to Finish" Watercolor Painting Demonstration with Catherine Hillis The demonstration will be held onsite in the Polasek Museum's Lakeview Garden.

TUESDAY, APRIL 21: 10 A.M. - NOON

"A Plein Air Portrait" Oil Painting Demonstration with Natalia Andreeva The demonstration will be held onsite in the Polasek Museum's Lakeview Garden.

TUESDAY, APRIL 21: 6:00 - 8:00 P.M.

"The Positive Impact of Negative Shapes" Oil Painting Demonstration with Cory Wright at The Alford Inn

Demo Topic: "The Positive Impact of Negative Shapes" The Alford Inn at Rollins College 300 E. New England Ave, Winter Park, FL 32789.



Maitland artist Don Sondag will be participating in this year's Winter Park Paint Out. Above, Stacy Barton, from Winter Park works on her art.

Winter Park Paint Out 2015 Schedule of Events

Gallery and Gardens Open Daily
Open House - FREE to the Public All Week

Sunday, April 19 through Saturday April 25

Sunday, April 19 - 1:00 to 4:00 p.m.

Monday, April 21 - through Friday, April 25
10:00 a.m. to 6:00 p.m.

Tuesday, April 22 - 10:00 a.m. to 8:00 p.m.

Saturday, April 26 - 10:00 a.m. to 12:00 noon

WEDNESDAY, APRIL 22: 10 A.M. - NOON

"Painting on Altered Ground" Oil Painting Demonstration with Irina Kovnacka Ashcraft The demonstration will be held onsite in the Polasek Museum's Lakeview Garden.

WEDNESDAY, APRIL 22: 10 A.M. - 2 P.M.

Winter Park Paint Out Second-Annual Student Day! The demonstration will be held onsite in the Polasek Museum's Lakeview Garden.

THURSDAY, APRIL 23: 10 A.M. - NOON

"Transparency in Watercolor" Watercolor Demonstration with Vladislav Yeliseyev The demonstration will be held onsite in the Polasek Museum's Lakeview Garden.

FRIDAY, APRIL 24: 10 A.M. - NOON

"Painting Flowers and Gardens" Oil Painting Demonstration with Steve Andrews The demonstration will be held onsite in the Polasek Museum's Lakeview Garden.

FRIDAY, APRIL 24: 3:00 - 5:00 P.M.

"Dappled Light" and Polasek Happy Hour Oil Painting Demonstration with Morgan Samuel Price The demonstration will be held onsite in the Polasek Museum's Lakeview Garden.

Other Special Events

PAINT OUT WELCOME RECEPTION

(Artists, Hosts, Patrons, Sponsors)
MONDAY, APRIL 20: 5:30 TO 8 P.M.

WEDNESDAY, APRIL 22: 6 TO 9 P.M.

Sunset "Paint In" The event will be held at the Winter Park Racquet Club which is located at 2111 Via Tuscany, Winter Park, Florida 32789.

ARTISTS AND PATRONS PRIVATE RECEPTION

Thursday, April 23: 5:30 to 8:00 p.m. The event will be held at the Woman's Club located at 419 S Interlachen Ave, Winter Park, FL 32789.

PAINT OUT GARDEN PARTY

Saturday, April 25: 6:00 to 9:00 p.m. Tickets will be available online www.polasek.org, or call the Museum at (407) 647-6294.

Continued on page 11

For more information about artists, including photographs and samples of work, please visit our online artist directory at www.interparkpaintout.org.

Night On Broadway 2015 "Once Upon A Time"

For over 15 years, Night on Broadway has been a highlight of the artistic year for Winter Park High School (WPHS) and the Winter Park community. This year's show, "Once Upon a Time" transports the audience to the land of knights, princesses, dragons, fairy godmothers, and more. The cast of over 250 chorus students will perform selections from a host of Broadway musicals, bringing alive the themes of beloved fairytales.

Night on Broadway is a professionally produced musical event performed annually at WPHS. The school's choral students undergo a month of intense rehearsals under the direction of Broadway Artist-in-Residence, Sue Delano, as well as WPHS choral directors, Matthew Swope and Joseph Kemper. This year's show takes place Thursday, April 23 through Saturday, April 25 at the WPHS Ann Derflinger Auditorium. Proceeds benefit the Tyler Rush Memorial Scholarship Fund.

Returning as artist-in-residence and director, Sue Delano brings to Winter Park her experiences on Broadway and numerous national tours including performances with Richard Chamberlain, Joel Grey and Liza Minnelli. Ms. Delano previously directed WPHS's highly successful productions of "Les Misérables," "Ragtime," and last year's 15th Anniversary Celebration.

"In presenting Night on Broadway each year, we honor the memory and spirit of former chorus student, Tyler Rush. In 'Once Upon a Time' we embark upon a quest that transcends the fairytale realm and leads us into a land of educational, musical, and personal transformation. We seek to inspire creativity and self-discovery in our students and audiences alike. This production would not be possible without the ultimate dedication of our students as well as the devotion and generosity of our parent organization, Broadway professionals, and local businesses. Everyone strives to make this production

truly exceptional each year," said Mr. Swope.

Tyler Rush (1983-1998) was an energetic and enthusiastic member of Park Singers and Concert Choir when his life was cut short by a tragic car accident. During his life, Tyler thrived in musical pursuits and on stage in productions such as Joseph... at First United Methodist Church of Winter Park, A Month in the Country at Rollins College Annie Russell Theater, and Godspell with the Park Singers. Thus, upon his passing, a musical celebration of Tyler's life seemed a most fitting tribute. Proceeds from Night on Broadway benefit the Tyler Rush Memorial Scholarship Fund which, to date, has awarded over \$100,000 in scholarships to deserving chorus students.

Performances are:

Thursday, April 23, 2015 at 7:30 p.m.
Friday, April 24, 2015 at 7:30 p.m.



Saturday, April 25, 2015 at 7:30 p.m.
Venue: Winter Park High School, 2100 Summerfield Road, Winter Park, FL 32792
Admission: \$17.00 per person.
Seating: Main Floor - Reserved Seating
Balcony - General Admission

For tickets and more information please call (407) 628-3028 or email NOBTICKETS@AOL.COM.



St. Augustine artist Charles Dickinson will be participating in this year's Winter Park Paint Out.

2015 Winter Park Paint Out Participating Artists

Natalia Andreeva, Tallahassee, FL	Matthew Cornell, Orlando, FL	Hai-Ou Hou, Stevensville, MD	Gary Rupp, Winter Park, FL
Steve Andrews, Tallahassee, FL	Kathleen Denis, Tavernier, FL	Irina Kovnacka Ashcraft, Winter Springs, FL	Morgan Samuel Price, Orlando, FL
Linda Apreletti, Miami Springs, FL	Charles Dickinson, St. Augustine, FL	Richard Lundgren, Jacksonville, FL	Mary O. Smith, Woodbine, GA
Stephen Bach, Orlando, FL	Bill Farnsworth, Venice, FL	Tim Malles, Gainesville, FL	Don Sondag, Maitland, FL
Stacy Barter, Winter Park, FL	Robert Frank, Tripp City, OH	Jeff Ripple, Micanopy, FL	Kent Sullivan, Orlando, FL
Christophe Cardot, Edgewater, FL	Catherine Hillis, Round Hill, VA	Robert Ross, Altamonte Springs, FL	Vladislav Yeliseyev, Sarasota, FL
			Cory Wright, Apollo Beach, FL

PHYSICIAN ASSOCIATES
ORLANDO HEALTH
Good Health from Our Family to Yours

Your Partner on the Journey to Optimum Health

Penny Danna, MD, FACOG
Board Certified in Obstetrics and Gynecology

Warmly welcoming new patients!

Conveniently located in Baldwin Park, Dr. Danna is devoted to caring for the special needs of women through all stages of life, from puberty through menopause.

- Testosterone pellet therapy for women
- Total and high-risk pregnancy care
- Well-woman exams
- Hormone replacement therapy
- Menopause care

Baldwin Park
867 Outer Road, Suite A
Orlando, Florida 32814
407-898-6588

Same-day appointments available!

www.paof.com

GUARANTEED INCOME FOR LIFE ... YOU CAN MAKE IT HAPPEN

One thing is for certain: the market will go up and down during every stage of your life. But as you draw nearer to retirement, having a guaranteed income plan will be important to you. Preparing today can protect you later.

To learn more about how an annuity from The Guardian Insurance & Annuity Company, Inc. (GIAC) can provide the income protection you need, give John Bell a call today.

407-628-8130
John Bell
MDRT
Financial Advisor
john_bell@glic.com

Value Shield Financial Services
1390 Hope Road
Suite 200
Maitland, FL 32751
www.valueshield.net

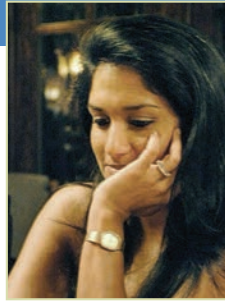
Fixed and variable annuities are issued by GIAC, a Delaware corporation. Fixed and variable annuities are long-term investment products designed for retirement planning, and are distributed by Guardian Investor Services, LLC (GIS). Product provisions and features may vary from state to state. All guarantees are backed by the strength and claims-paying ability of GIAC. GIAC and GIS are wholly owned subsidiaries of The Guardian Life Insurance Company of America, 7 Hanover Square, New York, NY 10004.

Financial Representative, The Guardian Life Insurance Company of America, New York, NY (Guardian).

Registered Representative and Financial Advisor of Park Avenue Securities LLC (PAS) 5426 Bay Center Drive Suite 550 Tampa FL, 33609 18888677283. Securities products/services and advisory services are offered through PAS, a registered broker/dealer and investment advisor. Financial Representative, The Guardian Life Insurance Company of America, New York, NY (Guardian). PAS is an indirect, wholly owned subsidiary of Guardian. This firm is not an affiliate or subsidiary of PAS or Guardian. [PAS is a member FINRA, SIPC]

Not a Deposit | Not FDIC or NCUA Insured | May Lose Value | No Bank or Credit Union Guarantee

EB016644
2014-11876 (Exp. 09/16)



Ayesha G. Bullock

live meaningfully by Ayesha G. Bullock, M.A.

Cogito Ergo Sum...Or Something Like That

"A mind is like a parachute. It doesn't work if it is not open." - Frank Zappa

My Latin is rusty...it's been almost twenty years and though Mr. Quirk (forgiving soul that he was) would probably still vouch for it - I'm not as confident.

Nonetheless, somewhere in my muddled brain (amid the years of Latin and Spanish) I believe I learned that "april" is derived from the verb "to open." It's entirely possible that I'm incorrect, but for the sake of this article and allowing for the suspension of disbelief - let's go with it.

This (albeit possibly erroneous) derivative works for my own personal conceptualization of Spring. According to this definition, April could then mark the true birth of Spring. It could allow for that which was frozen and closed, to open back up to the world. It could be illustrated by tulips opening and new trees sprouting. It could harken the dawn of a brand new, open day. Most importantly, it could compel those aware enough to 'get it' to open their minds

and lives past that to which they have become historically accustomed and by which traditionally inured.

So, for the sake of argument... Welcome April. Welcome Openings. Welcome the blossoming and awakening to that which we may have misguidedly been asleep.

To what will you open your mind? To whom will you open your heart? To which will you open your life? We have a finite but distinct window of opportunity in which to open ourselves and capitalize on this meandering road we call life. Are you doing it? Can you? Will you? What may be stopping you? Fear? Self-Doubt? Longing? Being Stuck?

According to George Eliot (or Mary Ann Evans, her real name) - "It's never too late to be who you might have been." Furthermore, it's my belief that all of the days which you've spent up

until that time, are important preparation for such.

It could be that you have been closed to possibility, to someone in your life or to yourself... Which-ever the case, it will require courage. Opening ourselves up to true vulnerability, closeness, understanding and authenticity is a scary notion. It

feels like a great risk to hope in such an unfettered way... to dare so greatly. But, as they say, with great risk comes great reward.

The ultimate mandate of a human being is to grow and actualize; the hopeful mandate of humanity is to connect.

We cannot connect without openness and vulnerability and we are wired for connection. So very 'pre-wired' for connection that, in fact, one of the only hard and fast findings on 'happiness research' is that hap-

piness requires an interpersonal element. One must have connection and relationships, no matter how much success, money, power, or fame in order to feel happy (...hence why 'solitary confinement' is among the most loathsome of punishments).

So perhaps April is about opening ourselves to the possibility that God and the universe have greater plans for us than even we could have been so bold as to dream. Perhaps life begins anew when we make that decision, sign up for that class, say it out loud, take that leap.

Perhaps our vision has been so myopic that we've lost sight of the horizon and all it has to offer. Perhaps we've been tethered to the familiar, however unsatisfying or unfortunate. Change is the ultimate agent of growth. April allows for the opportunity to open up and accept change.

So go! Throw your fear-based, limiting beliefs to the wind and allow yourself the permission and the fortitude it requires to open up to your potential, to your possibility, to your loved ones and to yourself.

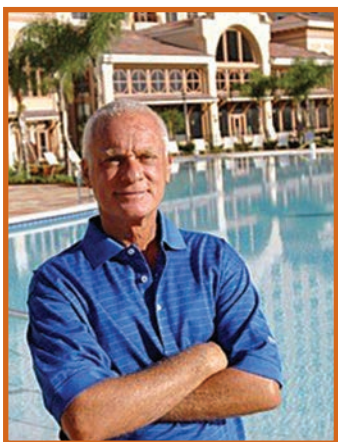
Be well; Live Meaningfully.
Till the next time,
Ayesha

*"Welcome April.
Welcome Openings.
Welcome the blossoming
and awakening to that
which we may have
misguidedly been asleep."*

Ayesha G. Bullock, M.A. practices at 2150 Park Avenue North as a Licensed Mental Health Counselor and can be reached at ayesha@livemeaningfully.net or 407-796-2959.

From page 1

In the Community Champion category, philanthropist Harris Rosen has been a dedicated OCPS business partner in education for over 20 years. He helped transform a high-crime neighborhood of Tangelo Park into a thriving, self-sufficient community.



Harris Rosen

ty Public Schools is fascinating, and will be celebrated May 15, 2015, at the Rosen Shingle Creek Resort where inductees will be invited as the district honors its 145th anniversary.

For more information about sponsorship and tickets to the induction ceremony and dinner are available at www.HallofFame.ocps.net

The long history of Orange Coun-

Welcome Home

Guidance and expertise to help you achieve your homeownership dreams

Contact us to get pre-qualified today.

2699 Lee Rd. Suite 480 Winter Park, FL
407.644.0870 Waterstone-FL.com

Waterstone MORTGAGE

Subject to credit approval and program guidelines. Waterstone Mortgage Corporation (NMLS #186434) is a wholly owned subsidiary of Waterstone Bank SSB (NASDAQ: WSBF). EQUAL HOUSING LENDER

WP-218-33114

Offering personalized service & attention to detail to every client.

THE JERRY OLLER & SHIRLEY JONES TEAM

- Fannie Hillman 2014 Top Producers
- Orlando Magazine's "Five Star Professionals"
- More than 30 years combined real estate experience
- Voted "Best Residential Real Estate Office" in Central Florida eight times by the readers of Orlando Business Journal.

Jerry Oller
jerry@fanniehillman.com
407.468.3498

Shirley Jones
shirley@fanniehillman.com
407.719.9180

www.fanniehillman.com | 205 W. Fairbanks Ave. Winter Park, FL

CALLING ALL SUMMER CAMPS!

The Park Press reaches more than 62,000 readers each month, and our May issue will be the perfect place to advertise your camp.

Contact Jan at (321) 422-8974 or email jan@theparkpress.com for more information.

A photograph of an elderly couple, a man and a woman, smiling and looking at a tablet together. The man is wearing a yellow polo shirt and the woman is wearing a blue long-sleeved shirt. They are in a well-lit, modern indoor setting.

SENIOR HEALTH *reimagined*

INTRODUCING CENTRAL FLORIDA'S **ONLY SENIOR ER**

At Winter Park Memorial Hospital, we've created the first and only ER in Central Florida designed for seniors. Here, a team of physicians and clinicians with specialized training in geriatric emergency medicine are uniquely experienced to meet the needs of older adults. Seniors in our ER are assessed for individual health and quality of life concerns and connected to resources in the community to help meet those needs. Plus, our senior-friendly environment features amenities designed to promote comfort and healing. **Finally, a comprehensive ER tailored to your specific needs. Now that's amazing.**

 WINTER PARK
MEMORIAL HOSPITAL
A Florida Hospital

The skill to heal. The spirit to care.®

WinterParkSeniorER.com



John Gill

fiscal fitness *by John Gill*

The Emergency Fund

The Emergency Fund is the one financial concept that most everyone is familiar with although most people don't have one.

At first glance, it's pretty easy right? Put three months to six months of expenses, or is it income, into an account? Once you decide what to save where does it go? Into checking or savings? Into a mutual fund or straight to the mattress? Considering the economy today, does it make sense to have an emergency fund? Once the fund reaches the goal level, what do you do with it? Should it just sit there in some account? Can I use it if I put it back? What type of return should I expect on the money? What is an emergency? Also, during tough financial times is this really a priority? When you take a more thorough look at the concept of the Emergency Fund, it turns out not to be a simple situation.

Generally speaking it is a simple concept. Set aside money to cover the unexpected curveballs that life throws at you. What qualifies as an

emergency? Loss of employment, short term illness, major vehicle repair, large medical bills, major home repair, you get the point. If you were to experience an event like those mentioned above and could just write a check instead of borrowing, the stress of figuring out how to cover the issue would be eliminated. More importantly, you pay for it when it happens and move on. A couple of things to consider: if money is borrowed for an emergency, the actual cost of the event increases because of the added interest paid over time; or if the problem is covered by liquidating investments there is the loss of income caused by the costs associated with liquidating the investments plus lost investment income.

Regarding how much should be set aside, strive for three to six months of expenses. If you are able to, three to six months of income is even better since it is a larger cushion. Of course one size does not necessarily fit all. If you have a large family or a large number of obligations, a larger fund may be necessary. Considering today's

times, a more practical approach may be to set aside several months of rent or mortgage payments coupled with a like number of car payments to start the fund and build on that.

For most people, building an Emergency Fund will take time, but that does not mean you should not strive for it. Also, even though the economy is still challenging for many, strive to set aside something for an emergency. Having a couple hundred bucks set aside for this purpose can be a good place to start while adding \$50 to \$100 each month until you reach your goal. The assumption when building such a fund is that you are reducing/eliminating debt. If you have a \$3,000 emergency fund on your way to \$6,000, but have \$5,000 in credit card debt, you may want to pay down a portion of the debt, say \$1,500 in this



example, while continuing to build the fund.

The next thing to consider is where to stash the fund. Checking, savings, and money market accounts are great places to start. Some may protest that the interest rates are low on these accounts. I would argue that the accounts are safe and the goal is not to generate spectacular returns. The account should not be easily accessible, no ATM or debit card access. Another idea is to place the fund in an account at a bank in another part of the city that is not your primary bank. This will require some thinking before withdrawing and reduce the chance that the funds are used for non-emergencies.

If you have questions, comments, or an area of financial interest you would like to see discussed in The Park Press, please call John at 407-353-0594 or send email to FiscalFitness@gmail.com. Follow John on Twitter, @john_gill1.



David Ciambella, CFP CSP

family business perspective *by David Ciambella, CFP CSP*

Keys To Preparing Your Successor

Just as there are many roads that lead to Rome, there are many paths that can be taken when it comes to preparing your successor. Many business owners believe operational experience in various aspects of the business and participating in industry specific learning opportunities are all that's necessary to become a successful business owner. However, this approach often results in a false sense of security for both the business owner and the aspiring successor. So, what else can you do to ensure your successor is adequately prepared to lead your business?

Begin by positioning your successor for success. While it may be tempting to have your child come to work for you immediately after completing college, it may not be in your child's best interest. Or yours. Requiring work experience outside of the family business can teach valuable life lessons and, more importantly, provide opportunities for your child to create some wins of their own. Additionally, employees tend to have more respect for individuals who have worked elsewhere and earned some battle scars of their own rather than coasting into Mom or Dad's business.

Once a family member enters the business, make sure he or she understands the difference between simply being an employee and the level of

commitment required to become a successor candidate. Place them in positions where they can earn respect by contributing in a meaningful, measurable position. Be careful not to promote too quickly as this does nothing but set your aspiring successor up for failure.

Institute a mentorship program. Developing a mentor-mentee relationship can be invaluable to your successor's career development. Therefore, encourage and help identify a culturally compatible mentor who can serve as a role model, and potentially an external resource to help guide and advise your successor. Having a mentor fosters personal and professional development and also can provide another element of accountability.

Create specific learning objectives and provide periodic performance evaluations. Everyone deserves and needs performance feedback, especially aspiring successors who may serve as the leader in the future. Ideally, this feedback should occur on a consistent basis throughout the year, not just on an annual basis.

Conduct a 360° Review and Assessment. A 360° Review and Assessment is a developmental tool designed to help identify leadership gaps and coaching opportunities. The review is designed to obtain honest, anonymous feedback from employees on a prospective or current leader's capabilities, strengths, and weaknesses in a variety of areas (such as decision making,

business acumen, approachability, communication, etc.). By gathering a well-rounded perspective from multiple individuals—including peers, superiors and subordinates—it will reveal how the individual perceives him/herself versus how those participating in the assessment perceive the current or prospective leader. At times there are stark contrasts in how people perceive themselves versus how others perceive them. Closing the gap in these areas and leveraging an individual's strengths is the focal point of the process.

Transfer critical relationships with manufacturers and strategic partners such as banks. This may seem like a no-brainer, but in many instances family business owners make the assumption that a manufacturer such as Ford or a franchise such as McDonalds or Subway will approve their identified successor or that bankers will unequivocally support their successor candidate. The fact is, transferring these critically important relationships is not automatic and should not be assumed. Find ways to include your prospective successor in meetings with manufacturers, bankers, and other strategic partners to solidify these relationships.

Provide opportunities for your successor to work with other members of your management team. Peri-



odically, there are projects and business opportunities requiring collaboration, analysis, or problem solving. Including your successor as a member of a project team can be a valuable learning experience. It can also provide you an opportunity to witness the teamwork and group dynamics.

Unfortunately, there is no shortcut to getting your successor to Rome; however, the steps above can help ensure your path doesn't hit a dead end. Successor preparation is a long-term process that requires time, patience, discipline, diligence, humility and accountability on both the business owner's part and the successor candidate's part. Properly preparing your successor can provide you confidence in your successor's ability prior to your exit from the business. Additionally, it should provide employees, lenders, and other stakeholders an added sense of confidence that your business will be in good hands when you eventually exit. Are you up for the journey?

David Ciambella, CFP CSP is a partner of The Rawls Group.



Jim Hasely

critical mass *by Jim Hasely*

Eliminate Capital Gains Using Donor Advised Funds

Charitable giving is a fulfilling way to better the world of which we are a part and many donate to charity for reasons including personal fulfillment, belief in a cause, or spiritual conviction. The tax code recognizes the benefit of charitable giving in our society and makes friendly provisions for those who donate cash or property.

The most common medium of charitable contribution is cash, usually written in the form of a check. While this form of giving certainly benefits charity and provides a tax deduction for donors, many donors do not realize they are missing an opportunity to save hundreds, thousands, or even tens of thousands in capital gains taxes by coordinating their gifts with a donor-advised fund.

Donor-advised funds are charitable giving entities created to manage charitable donations on behalf of organizations, families, or indi-

viduals. Cash or property given to a donor-advised fund are deductible within the guidelines of the tax code and once a donation is made a donor may advise the fund where to direct future charitable distributions.

This creates an opportunity for donors to make donations of highly appreciated property to a donor-advised fund, receive a tax deduction



for the gift, and eliminate the unrealized capital gains on the highly appreciated property. After completing a donation to the fund, the donor then asks the fund to make distributions to charities the donor wishes to benefit. The person making a donation can use funds they otherwise

would donate directly to charity to purchase other investments.

The following example may be useful: a donor owns shares of stock initially purchased for \$10,000 now worth \$120,000 that she wishes to sell to diversify her holdings. The donor has historically given \$20,000 annually to several charities she supports. If the donor sells the stock she will pay 15% in long term capital gains tax plus an additional 3.6% tax to support the Affordable Care Act, bringing the total estimated tax from sale to \$20,460.

Rather than sell the stock and make direct contributions to charity, the donor can donate the stock to a donor-advised fund allowing her to receive a current tax deduction based on the fair market value of the stock. Since the donor-advised fund is a charitable entity it can sell the stock without being subject to the taxes associated with the sale. With the donor's direction the fund can continue to make \$20,000 gifts to charity for several years. With the fund making distributions to charity, it frees the donor to use the \$20,000 she would otherwise have donated to charity to purchase the diversified portfolio she

desires over the next six years with a new tax basis. The donor's cash flow remains the same, however \$20,460 more dollars goes to local charity rather than the United States Treasury in the form of taxes.

Some donors can also use this strategy to purchase life insurance with zero net out-of-pocket cost. Rather than use \$20,000 to repurchase investments a healthy donor may choose to purchase a limited payment life insurance policy. After six years of premium payments the policy will be fully paid for, may have a cash surrender value exceeding the total premiums paid, all while creating hundreds of thousands of dollars of additional death benefit for the donor's family or favorite charity.

These tax efficient strategies can be adopted by anyone with charitable intent. The amounts used in the process need not be tens or hundreds of thousands of dollars. Some donor-advised funds will administer gifts for as little as \$5,000. While the process is not necessarily complex, donors should consult their qualified tax advisor and financial advisor for proper implementation.

James M Hasely, CFP is a financial services industry speaker and has been recognized by the LIFE Foundation with a realLIFEstories Client Service Award. For questions, Jim can be reached at jhasely@financialguide.com or 407-661-2289.

nature in the parks

Photos by Richard Johnson

It's April and that means you will find me walking with my camera around Lake Susannah, the Lake Baldwin connector pond, my favorite pond in all of Baldwin Park. April is the time of year when the pond comes alive with egrets, great blue herons, red-shouldered hawks, rabbits, butterflies, mockingbirds, finches, fish, and much more. If you haven't already discovered this truly magical pond, now is the time of year to do so.



RichardEarlPhotography.com



Richard Johnson is a professional photographer. See more of his work at www.RichardEarlPhotography.com



Scott Hillman

real estate in the parks by Scott Hillman

Low Down Payment Mortgages Look Good On The Surface, But...

When mortgage giants Fannie Mae and Freddie Mac recently announced their new down payment mortgage programs as low as three percent, proponents said it could open the door to home ownership for thousands of first-time buyers and cash-strapped borrowers. That's a good thing.

On the other hand, a word of caution. The housing industry needs to be extremely careful because it was practices like this—making it too easy to get financing for persons with questionable financial histories—that led to The Great Recession just a few years ago.

Essentially, when the FHA dropped its annual insurance premiums on new mortgages from 1.35 percent to 0.85 percent, Fannie and Freddie lowered their minimum standard FICO credit scores to 620 and 660, respectively, to help home buyers qualify for 3% loans underwritten manually by lenders. To qualify, Fannie Mae's program specifies at least one buyer cannot have owned any residential property in the past three years, while Freddie's program doesn't require

borrowers to be first-time buyers, but does require them to complete homeownership classes.

The intention of both programs is great. I think it's admirable to help people achieve the Great American Dream of homeownership. However, without some personal financial investment by the borrower and some assurance that he can pay off the loan (even though he has private mortgage insurance), we could be returning to the economic quandary we found ourselves in less than 10 years ago by selling paper to the same people who bought it back in 2004 and 2005. It wasn't quality paper then, and it wouldn't be now. Mortgages with low down payments could easily expose borrowers, Fannie, and Freddie to some of the risks that precipitated the financial crisis that reached critical mass some eight years ago. And, should home prices drop, homeowners with a small amount of equity in their

homes can quickly owe more than their homes are worth. Sound familiar?

I'm not so sure a 3% down payment would appreciably change the homeowner landscape when you consider average interest rates for standard 30-year fixed-rate mortgages already on the market are at historic lows, hovering at or just under 4% for borrowers with good credit ratings. Plus, the median price for area homes on January 31, 2015 stood at \$155,000 which is affordable for a great many home buyers, including first-time buyers.

The fact that big banks aren't rushing to offer the new low down payment mortgages offered by Fannie and Freddie might just signify a less than favorable response to a program that, on the surface, looks good, but underneath seems to present more possible problems than solid solutions.



Scott Hillman is president of Fannie Hillman + Associates, a 34-year-old Winter Park-based real estate company specializing in residential real estate sales and producer of The Hillman Report, a semiannual look at residential real estate in Orange and Seminole counties that can be viewed on the company's website (fanniehillman.com) or by calling (407) 644-1234 for a copy.

For More News, Information and Great Events, Visit TheParkPress.com!

Contact Fannie Hillman today and experience the support of Winter Park's largest independent real estate office.

Serving Central Florida for over 34 years

Hillman
Fannie Hillman
Hillman
ASSOCIATES



Lakefront Estate on Winter Park Chain of Lakes
4 BR • 3.5 BA • 4,907 SF \$1,385,000



Totally Renovated in Dommerich Estates
4 BR • 4 BA • 2,681 SF \$599,000



Winter Park Mediterranean Masterpiece
5 BR • 4.5 BA • 3,998 SF \$1,450,000



Winter Park Custom Built Beauty
5 BR • 3.5 BA • 4,406 SF \$1,365,000



Walk to Park Avenue From Lovely Pool Home
4 BR • 2.5 BA • 2,932 SF \$729,000



Elegant Pool Home in Lake Colony Estates
5 BR • 5 BA • 4,630 SF \$789,000

We improve the lives of the people we serve.

205 W Fairbanks Avenue, Winter Park, Florida 32789
407.644.1234 800.283.6235
www.fanniehillman.com

LEADING
REAL ESTATE
COMPANIES
OF THE WORLD

LUXURY
PORTFOLIO
FINE PROPERTY COLLECTION

Voted "Orlando's Best Real Estate Office"
2005, 2006, 2007, 2008, 2009, 2011, 2012, 2014
Orlando Business Journal



Stephen & Kristin Pategas

in the garden *by Stephen and Kristin Pategas*

Shrub Rehab

Many shrubs grow to a point where they just don't fit in the garden anymore - physically and/or aesthetically. Often, they grow larger than anticipated, but fortunately, they can be rejuvenated with proper pruning. As our own garden matures we have pruned a number of shrubs to reduce them in size and improve their looks and blooming. Resist the urge to remove them and instead, read on...

The first step is to determine the potential mature height and width of the shrub. The odds are great it will grow larger than what you see in the nursery pot. Once you know what it is capable of, figure out the size you need the plant to be in the garden. Must it stay below a window sill or roof eave, or rise above the fence to screen a house next door? Also consider the width and whether it is too close to the house, driveway, walkways, or other plantings. Perhaps it's shading out plants underneath. Prune plants that bloom on new wood at any time.

Trim plants that flower on old wood within a few months of the blooming time and before they set new buds for the next year's flowering.

That's enough calculating, now the ground rules:

- Trim branches back a minimum of 12 to 18 inches beyond where you want the final height or width. This allows room for the plant to grow out with soft growth that is easier to trim.

- Trim some branches back even further almost to the center of the plant to allow light to enter and stimulate new interior growth.

- If the plant in question is much larger than what is desired, then heavy pruning is required. Remove up to one-third of the mature branches each year over three years. This method allows the plant to always look reasonably presentable. Or cut it all of the way back and watch it come roaring back.

- As plants grow out, make frequent cuts to shorten long branches. This encourages them to branch out and for the shrub to become full. Trim

away crossing or parallel branches.

- Make pruning cuts just above buds.
- Avoid shearing, which cuts away most flower buds and creates dense growth that shades the interior and shortens plant life.

- Do not perform "crepe murder." Prune for structure while other cuts to shape are made on branches no thicker than a pencil.

- To reduce the chance of new growth being damaged by the cold, perform major pruning only from late February to late October.

- A bypass hand pruner, bypass lopper, and folding pruning saw will help make these tasks go smoothly. Keep your tools sharp and oiled and regularly disinfect them so diseases are not spread between plants.

Maintain shrubs at the size needed, but for lower maintenance select the right shrub for the space and it may require only minimal or no pruning.

All photos by Stephen G. Pategas/Hortus Oasis.

Before And After



Beautyberry with partial rehab cut in March.



Same beautyberry one month later

Before And After



Major rehab in March on dwarf Walter's viburnum



Same dwarf Walter's viburnum one year later in bloom, but it was full after six months.

Hortus Oasis (FL26000315) in Winter Park is a boutique garden design company specializing in residential, commercial and specialty gardens. Stephen is a registered landscape architect and Kristin is a certified landscape designer. Contact them at 407-622-4886/garden@hortusoasis.com

FLEXIBLE LIFESTYLE ...

[SIMPLICITY, BALANCE & PEACE OF MIND]



The Mayflower offers a holistic approach to retirement living.

As a yoga instructor, Audrey Pekor values simplicity, balance and peace of mind. She's found all those things – and more – at The Mayflower.

"I just feel like I'm in a wonderful place," she says. "I can have my privacy when I need it, and I can go out and do any number of things."

From the comfort of her apartment's customized meditation room, Audrey is able to practice techniques that produce physical, mental and spiritual benefits. She also has access to a fully equipped Fitness Center, heated pool, group exercise classes and beautifully landscaped walking paths.

"I appreciate how The Mayflower takes a holistic approach to health," Audrey says. "Living here truly stimulates the body, mind and spirit."

**What's your plan for the future?
Call today, and let's talk about it: 407.672.1620.**



THE MAYFLOWER
www.themayflower.com
1620 Mayflower Court
Winter Park, FL 32792



the educated palate by Scott Richardson



Scott Richardson

Umi – Stylish Japanese Restaurant On The Avenue

I like to think when a new Japanese restaurant opens in Central Florida that they offer something different from all the other Japanese restaurants.

Umi, located towards the Rollins College end of Park Ave in Winter Park, offers guests a fresh look at Japanese cuisine in a stylish way, which truly differentiates them from others in the area in their menu offerings.

On our visit, the host and then our server, David, greeted me and my dinner guests warmly letting us know about some of the menu items, adding that the dishes will arrive at the table as they are completed so keep this in mind when you order.

On this particular visit, Umi had a special to offer their guests. While I typically do not order specials, the Blue Fin Toro sounded too good to pass up. The “Toro” is the belly of the Blue Fin, a more expensive part of the fish and highly prized in Japan because of its scarcity. Umi’s version adds a

creamy smashed avocado to this dish and serves it with toasted crostini triangles.

Umi offers both Robata, which means “fireplace” or “hearth” and is utilized typically in the town of Hakkaido, northern Japan for the fresh catch of the day. Looking over the menu, the usual sushi rolls were an option to order, but I have had most of the rolls on the menu elsewhere.

We started with an order of Uni (\$4.50). We loved the creaminess of the sea urchin; this Uni was firm but sweet with a lot of flavor. Uni reminds me of when I walk along the beach in the morning and the

spray of the ocean envelopes the coastline.

Next, we tried the Naked Tuna (\$14), wrapped with rice paper, mixed greens, a tangy crab salad, asparagus, and a dab of spicy mayo. The rolls at Umi are rolled nice and tight, great for dipping in your soy sauce. Staying with the seafood options, we ordered the Pan-Fried Sea Scallops (\$14), which were served with candied walnuts, and a Shiso pesto, garnished with diced orange. This is a must try dish. We all loved the crunchiness of the walnuts and sweetness of the perfectly seared scallops. Something I have not ordered at a Japanese restaurant is the Kumamoto oysters (\$20), which our server said came from Maine. Six of these bivalves were served on a bed of ice with cocktail sauce, a side of granita and tangy yuzu ponzu sauce. All of the presentations were unique. We were



Above, Uni.



Above, Godzilla Roll. Photos by Scott Richardson.

impressed by the care each dish took to make and of course the service levels were on par with the epicurean experience.

I will visit Umi again to sample additional rolls and try the Robata menu. This is a little gem on a street that has so many restaurants to try... Make Umi your next one!



At right, Blue Fin Toro.



Interior photo courtesy of Umi.

Santiago's Bodega
a tapas-style restaurant & bar

Ivanhoe Village 802 Virginia Dr.
www.santiagosbodega.com
407-412-6979

Full Menu Available 11am- 1:30am
Happy Hour Daily 4pm-6pm & 11pm-1am
Saturday & Sunday Brunch Buffet 10am-2:30pm

Orlando ✨ Key West

mi TOMATINA
paella - tapas - vino

<p>PAELLA MADNESS FRIDAY, SATURDAY & SUNDAY 11:30am - 3pm</p> <p>\$13 ALL YOU CAN EAT PAELLA</p> <p>\$4 MIMOSAS BY THE GLASS</p> <p>\$4 BLOODY MARYS</p>	<p>HAPPY HOUR MON - THUR 5 - 8 PM FRI, SAT & SUN 3 - 6 PM</p> <p>WINE - \$3.00 DRAFT BEER - \$2.50 WELLS - \$3.00</p>
--	---

www.mitomatina.com

433 W NEW ENGLAND AVE | WINTER PARK, FL 32792 • (321) 972-4881

Located downtown Winter Park at the beginning of Park Avenue, across from Rollins College.

Umi

Open 7-days a week lunch & dinner

Sushi & Sashimi
Robata charcoal grilled meats, seafood & vegetables
Japanese fusion cuisine
Beer, sake & wine bar

525 S. Park Avenue Winter Park, Florida 32789 • 407 960 3993
www.umiwinterpark.com

Canopy Cafe

\$4 House Wine SPECIALS
(dinner nights only.)

55+ Seniors
Breakfast Special
M-F \$5.99,
includes orange juice or coffee

Now Open Late!
'til 9pm, Serving Beer & Wine, Dinner Specials

HOURS: Mon-Th 7am-2pm, Fri-Sat. 7am-9pm, Sun 8am-9pm

240 N. Pennsylvania Ave., Winter Park, FL 32789 • 407-628-0068

pop culture detours by George McGowan

Why Can't I Finish Just One Of These Books?

In preparing for this month's column, I looked back to my previous month's columns. In reverse order, music and movies, music, TV. So, I should maybe write about books. Ugh. If that is the case, a confession is in order.

I haven't finished a book since January. While that might be a good history for some, it isn't for me.

Who or what is to blame? Just little old me. Why? I think I have gotten into a bad place where I have too many books on my bedside table and in my Kindle that are partially completed. I've reached a point where I can't decide which one should get my attention. None of them stand out as captivating, yet all of them are interesting. Maybe a rehash of each of them to you will help me decide.

The latest book I've started is perhaps the most conventional. It is "World Gone By" by Dennis Lehane. Lehane is a crime fiction writer most famous for his novels set in Boston: "Mystic River" and "Gone Baby Gone." Both were made into decent films by Clint Eastwood and Ben Affleck. His latest series of books follows a character, Joe Coughlin, who moves from his home of Boston and his life as the ne'er-do-well son of a police captain to Tampa to become

a new breed of crime lord. The latest novel is set in Ybor City and Cuba and involves all manner of intrigue.

I've also started "Savor: Mindful Eating, Mindful Life" by Thich Nhat Hanh and Lilian Cheung. This book is my latest effort to change my eating habits and become a healthier and smarter eater. It combines the Zen philosophy of mindful living with the practical knowledge of nutrition. Self-help! You would think that would be no-brainer. I definitely need to get back to this one!

How about "A Brief History of Time"? I cracked this classic open (again) in the wake of the biopic of author Stephen Hawking that was recently released and nominated for several Oscars, "The Theory of Everything." I've gotten just as far as I have always gotten. That is - not far.

Now to the highbrow section of my reading list. The "Beowulf" translation done by poet Shamus Heaney. Hey, if my kids can read this in their high school English classes, I certainly could. And it is really good. I have no excuses with this one.

I am giving myself a break on "Moby Dick" by Herman Melville - this one gives everyone fits. But d**n it is it good (and long).

Here is maybe the book I am most

guilty about starting and not continuing: "Wayfaring Strangers: The Musical Voyage from Scotland and Ulster to Appalachia" by Fiona Ritchie. A very thoughtful gift from my wife at Christmas, this book combines two aspects of my personality, music and my Irish heritage, which should have made this a "slam dunk" from an interest point of view. I'll admit that its size and scope are daunting but I should be making my way through this one. I just haven't given it a fair chance!

Yes, there are more books. And yes, it is pathetic.

The next two are also right up my alley but both turned out to be more challenging than I expected: "The Sabermetric Revolution: Assessing the Growth of Analytics in Baseball" by Benjamin Baumer and "The Sense of Style: The Thinking Person's Guide to Writing in the 21st Century" by Steven Pinkler. The former is about



the sport most dear to my heart and the latter is about exactly what I am doing at this moment! Both will be useful and contribute to my understanding of both of these important things in my life. They should be selling themselves. But, they are d-u-l-l.

So, what's your verdict? Which one would you choose?

theater in the parks by Barbara Solomon

Thanks For The Memories

THE PHILADELPHIA STORY
WRITTEN BY PHILIP BARRY
DIRECTED BY ARADHANA TIWARI
STARRING PIPER RAE PATTERSON
AND BRIAN BRIGHTMAN

Welcome to the 1940's version of the bachelorette. She lives in a sumptuous Philadelphia mansion-I just wanted to move right in. And she is pursued by three eligible bachelors. Bachelor number one is her current fiance, George Kittredge (Scott Edwin Leake), an extremely wealthy yet boring businessman. Bachelor number two is her charming ex "devil may care" husband, C. K. Dexter Haven (Brian Brightman). And bachelor number three is a handsome writer, Mike Connor (Robert Johnson), sent to cover her nuptials. All three vie for her love in different ways, and with that comedy abounds. Add to that the antics of Uncle Willy (Brian Chambers), a dirty old man, and we have an evening of hilarity.

The wonderful set by William Elliott and Lisa Buck was only outdone by the stellar acting and direction of Aradhana Tiwari. Piper was perfect as Tracy Lord, the bride-to-be, alias the bachelorette. She literally lit up the

stage. Brian played his sardonic part to the hilt - you may remember him from "The Letters" - proving he can excel at comedy as well as drama. Uncle Willy was absolutely adorable-I wanted to jump on stage and pinch his bottom. Tommy Kiesling, a Mad Cow mainstay, always gives a great performance. And I loved Leslie Penuel as the staid Philadelphia matriarch-she had just the right mix of motherly love and snobbery to make her quite believable, even though I know her personally, and she is just as sweet as can be in real life. Let me not forget Becky Eck as the photographer, who is marvelous in any role she plays. The only actor I found fault with was Kennedy Foristall as the pre-teen sister; she always overacts no matter what role she has.

So who did the bachelorette choose? I guess you'll just have to take the Sun Rail down to Church Street to find out. And while you're there, enjoy the show!

Playing through April 19th at The Mad Cow Theatre, 54 West Church Street. For more information call 407-297-8788 or visit madcowtheatre.com.

The Winter Park

playhouse

stephen sondheim's

PUTTING IT TOGETHER

a musical review

April 17 - May 9, 2015

This humorous and sophisticated Broadway musical revue pays tribute to composer Stephen Sondheim's incomparable career in musical theatre. Featuring nearly 30 of his well-loved songs including numbers from *Company*, *Into The Woods* and *Sweeney Todd*!

407-645-0145 | winterparkplayhouse.org
711 Orange Ave Suite C, Winter Park, FL 32789

A 501(c)3 non-profit charitable organization

BARB'S BEST BETS FOR APRIL: "PUTTING IT TOGETHER" AT THE WINTER PARK PLAYHOUSE, "BOEING, BOEING" AT THE GARDEN THEATRE, AND "BAD DOG" AT ORLANDO SHAKES.

schools

**Aloma Elementary**PRINCIPAL'S MESSAGE FROM
JENNIFER GRAMZINSKI

Great things are happening at Aloma Elementary School!

Our Jump Rope for Heart event was a huge success thanks to the contributions and support of our parents. Aloma students raised over \$1000 for this worthy event, evidence that our Eagles have a great heart and compassion for helping others. Our next community service project will be hosted by our Student Government Association. A food drive will be held from May 11-20th. Non-perishable food items can be dropped off in the front office.

Our students have been very active with our new academic clubs. As we approach the end of this school year, Aloma students are participating in many district events including the STEM Rube-Goldberg Challenge, Chess Tournaments, Battle of the Books, and the Modern Woodman's Speech Contest. All students in grades three through five have participated in the districts first Elementary STEM Expo and we are proud to see our students showcased in the community. I would like to send a special thanks to our amazing PTA members who provide solid and on-going support to school through various fundraisers, family events, and as classroom volunteers. Our upcoming school book fair will be held from May 15th-25th in conjunction with our Spring PTA Family Fun Night on May 15th at 6:00p.m.

This May Aloma will hold our First Annual Multicultural Fair on May 6th! Did you know that Aloma Elementary has students who speak 23 different languages from around the world? We look forward to learning and celebrating the diverse cultural backgrounds at this fun family event. Please save the date to join us!

As we wrap up the 2014-2015 school year, we are proud of our students for their hard work and academic gains this year. Summer book titles for the Principal's Book Club will be posted on the school website so students can keep up their reading skills over the summer months. We encourage you to stay in touch with Aloma's current happenings via our Facebook page.

**Audubon Park Elementary**

PRINCIPAL ANNA FERRATUSCO

Audubon Park Elementary's fabulous Parent Teacher Organization hosted their annual Springfest on Saturday, March 14th. What an amazing event to celebrate Audubon Park and the community. The annual Springfest featured games, rides, rock walls, food, and bounce houses. Staff members were challenged in a warrior challenge that showcased their strength and agility. Thank you to all our partners and vendors for making this such a fun day, especially the Baldwin Park Publix. This event is raising funds to upgrade the presentation computers in each classroom this year. Thank you PTA!

**Brookshire Elementary**

PRINCIPAL SUSAN MULCHRONE

Students across the state took FSA Writes. This is the most rigorous writing test students have ever taken in the state of Florida. Students were required to read multiple texts and compose an essay using evidence from those texts. Thanks to the dedication of the teachers and coaches at Brookshire, we are proud to report that students did a fantastic job. All signs point to success as students used the entire allotted time for their writing and many students reported that they were able to go back and edit any errors they made. Prior to the test, Brookshire implemented a shift in the writing instruction which focused on conferencing to give individualized feedback to each student based on their writing. This was done by having academic coaches push into classrooms. We are very proud of the students, teachers, and coaches at Brookshire Elementary!

**Dommerich Elementary**

PRINCIPAL DR. JUNELLA HANDLEY KREIL

Did you know... Dommerich Elementary first opened as Maitland Elementary and Junior High School? Due to overcrowding, the original red brick Dommerich Elementary was built and opened in March 1965. Fifty years later, we now proudly serve over 600 students from the cities of Eatonville, Maitland, and Winter Park. Please save the date for our 50th Anniversary event at our school - May 1st 2015 at 5:30 p.m. If you have any photos or memorabilia you would like to share with us, please contact Pansy Gilbert at pansy.gilbert@ocps.net. We would love to incorporate it in our festivities!

Please also mark your calendar for the following important dates in April: Florida Standards Assessment (FSA) continues for 3rd, 4th, and 5th -grade students this month; Dommerich will be skating at Semoran Skateway on April 2nd and Walking n' Rolling to school on April 8th; Report Cards go home April 3rd; and Report Card Conference Night is April 8th.

**Fern Creek Elementary**

PRINCIPAL JASON FRITZ

By Lindsay Darby - UCF

Everyone at some point in his or her life has experienced "the new kid," whether it was you or the person who just appeared next to you in science one day. As the new kid gets noticed, the poking and prodding begin and soon everyone knows their entire life story. Well, as a communications intern, it's in my nature to ask questions so I decided to ask the new kid at Fern Creek for some history. Turns out, the "new kid" was none other than Jason Fritz (or as many know him, Principal Fritz). Well, if he's in charge I guess it's time we learn a little about him.

WHO IS JASON FRITZ?

Where are you from originally?
Richfield, Minnesota

Are you married? Do you have children?

Yes, I am married and have two beautiful children. We also have two fur children, our rescue dogs.

Where did you attend College?

I received my bachelors from UCF and my masters from The University of Phoenix.

What has been the hardest thing for you to adjust to while working at Fern Creek?

The hardest thing to adjust to is being the principal. This is my first principal assignment and it comes with a completely different set of responsibilities than when I was an assistant principal. It has been a great experience so far as we continue working toward success!

When did you decide you wanted to be a principal?

From the day I started teaching.

What are three adjectives that describe you best?

Reflective. Sincere. Humorous.

What previous experience did you have working with low income and "at-risk" students?

I have experience in multiple low-income areas and with "at risk" students. I completed internships at Tangelo Park Elementary and Pine Hills Elementary. I have also been an administrator at Pinewood Elementary, Apopka Elementary, and now Fern Creek Elementary. Each school has offered its own unique and wonderful experience.

How do you identify the educational needs and values of the community?

We conduct surveys, offer parent nights, and communicate with our students and families. We also have a foundation that reaches out to and provides services to our community members. They assist and identify areas of need as well. One thing that is great about The Creek is that we are always looking to support and provide for all students who attend Fern Creek ES.

**Killarney Elementary**

PRINCIPAL KELLY STEINKE

It's hard to believe that we are already in the last grading period of the school year! Throughout the month of April, students in grades 3-5 will participate in the Florida Standards Assessment (FSA) to measure their learning in the areas of English Language Arts and Mathematics. Our students and teachers have worked incredibly hard throughout the school year, and we are excited to see the growth they have made. We greatly appreciate all of the support we have received from our community and business partners in work-

ing with our students to help get them prepared, as well.

Report Cards go home on Friday, April 3rd, and our ceremonies honoring our hard-working students will be held the following week. We look forward to seeing the smiling faces of our parents and families in the audience as we recognize our students for their accomplishments!

**Lake Silver Elementary**

PRINCIPAL SARA BIGALKE

Happy Spring! Our students are ready for FSA! Bring it on! The students who took the Florida Alternate Assessment and the CELLA test were also well prepared and did well. I can't thank our teachers enough for all of their great teaching.

Our guidance counselor, Mrs. Weckerle, hosted a wonderful Curriculum Night "Powering Up Parents - Empowering Students to Reach for the Stars." Families were able to attend sessions on encouraging responsibility, transition to middle school, supporting learning at home, and more. The spring Book Fair stayed open late that night and parents were able to purchase books for summer reading. Thank you College Park Papa John's for donating pizza and the First United Methodist Church of Winter Park for donating a bicycle through their Bicycle Blessings program.

Congratulations to our Odyssey of the Mind teams for their outstanding teamwork and problem solving at the regional competition. Mr. Shivers was awarded the Wizard of Odyssey award for his work as the OM Coach.

Congratulations to our Oration Contest finalists and winners. These fifth graders were amazing as they spoke about "An Interesting Landmark."

The Lake Silver Running Club, Tigers on the Run, had over 100 strong at the Edgewater High Eagle Flight 5K. The club was awarded the Spirit Award. Thank you, PTA, for your help with this event.

We look forward to April 1 and April 15 where we will have a full day of school! Go Tigers!

**Lake Sybelia Elementary**

PRINCIPAL DR. JULIE PARADISE

We ended March by taking our spring break and now everyone is relaxed and ready to spring into action in April. We will be very busy as this is our testing season.

Our FSA testing will run through the month of April. Our 3rd and 4th graders will be testing the first two weeks and our 5th graders will be continuing their testing through the end of April. Everyone has worked so hard and now they will have the opportunity to show how much they have learned.

Kindergarten registration begins on April 15. We invite all of our parents to register their children for kindergarten. This is so important because it helps us determine how many kindergarten teachers we will need next year. Kindergarten Orientation

Continued on page 21

schools

will be May 20 and all of our new kindergarteners, new first graders, and their parents are invited to come for a tour of the school.

Our PTA enrichment classes will begin on April 22. Our students always look forward to these after-school classes. We appreciate the support of our PTA and how hard they work to provide wonderful experiences for our students.

Our 5th graders are writing speeches about a monument that inspires them. They will be presenting their speeches in class. Our top seven will be participating in our Level 1 Oration Contest on May 1st.

Lakemont Elementary
PRINCIPAL DR. BRENDA CUNNINGHAM

This month's article is submitted by Lisa Huddleston

You think YOU'VE got problems? Lakemont's got students who can help solve them. Recently, several of our brightest fourth and fifth-grade students (Caleb Abbott, Madison Batten, Max Berger, Rebecca Bernhardt, Omar Chehab, Owen Clark, Hope Engilis, Sarah Finrock, Dylan Fitsimones, Janelle Gidus, Jacob Harmonay, Andrea Ignjatic, Alexa Larson, Arden Manos, Sidney Phillip, Tyler Player, Jack Sullivan, Brianna Taylor, John Vance, and Darcy Zobel) competed at Florida's Future Problem Solving Pro-

gram Competition. The Future Problem Solving Program International (FPSP) is a research-based academic program teaching problem solving strategies, collaboration, critical/creative thinking, and effective communication across the curriculum. The program's goal is to inspire creativity in students and encourage them to develop a positive vision for the future. It empowers students to solve global challenges. This year's topics were The Impact of Social Media, Processed Foods, and Propaganda. Students prepared several weeks in advance, using primary and secondary resources to conduct research, apply the problem-solving model to address the complex societal problem area, and propose an action plan.

Coached by the Gifted Resource teacher, Mrs. Lisa Huddleston, five teams from Lakemont were represented at the district competition in February (held at the Orlando Science Center). These students worked diligently to read a future scene, identify challenges, focus on one underlying problem, produce solution ideas, and develop an action plan. After they had written their booklet, students wrote a skit, created props and costumes using limited materials, and then performed their skit outlining their plan to an audience of over five hundred people. Congratulations to Madison Batten, Alexa Larson, John Vance, and Darcy Zobel



Congratulations to Lakemont Elementary School students. Pictured above, Madison Batten, Alexa Larson, John Vance, and Darcy Zobel who placed third and will advance to the State Competition in March.

who placed third and will advance to the State Competition in March.

Lakemont is proud to continue this academic competition tradition which empowers today's students to solve the problems of the future. Our future is in good hands with Lakemont Leopards!

Maitland Middle School
PRINCIPAL DR. STEFANIE C. SHAMES

Maitland Middle School's athletes have done it again! Both the boys and girls basketball teams are the undefeated Cluster Champions. Currently, the boys have advanced to the Orange County Public School semifinals, and the girls have fallen out of contention.

The Dr. Nelson Ying Orange County Science Exposition (Ying Expo) was held at Rollins College on February 8th and 9th. The event is affiliated with the Florida State Science and Engineering Fair and the Intel International Science and Engineering Fair and includes projects from both public and private school students in Orange County. The following 25 sixth grade students in Dr. Anne Albright's Life Science class participated and represented Maitland Middle School at the Dr. Nelson Ying Orange County Science Exposition: Christian Almaguer, Emily Chae, Michael Conti, Alice Copeland, Elizabeth Critcher, Emma Davis, Jaden DeJesus, Emelia Delaporte, McKenna Hagerty (7th

Grade), William Halligan, Catherine Harrity, Casey Hodge, Lucas Hoeksema, Lane Jones, Ethan Lines, Gilen Manos, Zion Miller, Emma Noel, Mariana Olivares-Cely, Emma Peltz, Thaleia Roda, Lauren Rugh, Emerson Searl, Ciera Stone, and John Zollars.

At the Science Exposition Awards Ceremony held at Howard Middle School on February 17th the following students were recognized:

First Place: Michael Conti (Environmental Science) Project Title: The Effect of Plants on Climate Change and Ocean Acidification

*Michael will advance and participate in the Orlando Science Center Science Challenge and the State Science Fair.

Second Place: Ciera Stone (Physics) Project Title: Lead Climbing Falls: The Effects of Fall Factor and Shock Load

Third Place: Christian Almaguer (Microbiology) Project Title: The Effect Of Natural Oils On Coagulase Negative Staphylococcus Aureus

Third Place: Emma Noel (Zoology) Project Title: The Best Water Temperature For Ghost Shrimp

Continued on page 22

MAITLAND MONTESSORI SCHOOL, INC.

Sign up now!!!

AMS- & SACS-Accredited
Individualized for each Child
After-School Care
Accepting VPK
Grades Preschool-6th
Servicing Central FL since 1987

Summer Camp Available!!!
June 3-August 7
Flexible schedules from \$140 per week
Fun & Educational Activities
Camp Themes
Propulsion, Box Car, Roller Coaster Science & Design, Fitness & Fun, Hovercraft, Art from the Heart, Imagination to Design

236 NORTH SWOOPE AVE., MAITLAND 32751
(407) 628-0019
WWW.MAITLANDMONTESSORI.ORG

Like us on Facebook

TUTORING
PERSONAL ATTENTION, PROVEN RESULTS.

For over 36 years, our proven method has helped thousands of students improve skills, confidence, and grades.

- All Grades (K-12)
- All Subjects
- SAT & ACT Prep

SAVE \$100 WHEN YOU MENTION THE PARK PRESS!

Huntington
Your Tutoring Solution

1 800 CAN LEARN® • HuntingtonHelps.com

Winter Park
1997 Aloma Ave
407-644-0456

schools

HONORABLE MENTION AWARDS:

Emelia Delaporte (Botany)
Project Title: Growth Rates of Rosemary and Basil in the Same Environment

Hagerty (Engineering)
Project Title: Earth Vs Structure

William Halligan (Computer Science)
Project Title: Computerized Tic Tac Toe

Lane Jones (Microbiology)
Project Title: Toothbrushes: Exposed!

Lauren Rugh (Engineering)
Project Title: How Bridge Design Affects Bridge Strength

SPECIAL AWARDS RECOGNITION WERE GIVEN TO THE FOLLOWING STUDENTS:

CDM Smith Award in Engineering:
McKenna Hagerty
Project Title: Earth Vs. Structure

Lukas Nursery Butterfly Encounter Award in recognition of her high quality invertebrate research: **Emma Noel**
Project Title: The Best Water Temperature For Ghost Shrimp

Office of Naval Research Award for her project having important naval applications:
Elizabeth Critcher
Project Title: From Seawater to Fresh Water

Palmer Landscape Award for her outstanding project in the category of Botany:

Emerson Searl
Project Title: Earthworms & Philodendrons: The Effect of Symbiosis

St. Margaret Mary Award for projects that exemplify good, solid use of the scientific method:

Casey Hodge
Project Title: Microorganisms In Water



Maitland Montessori

DIRECTOR'S MESSAGE FROM ADELE FONDO AND MURIEL OWENS

Each year Maitland Montessori School honors the founder of the philosophy and principles we use in education. Maria Montessori was one of the first females to become a medical doctor in Italy in the 1890s, and she developed her theories through the direct observation of children.

Dr. Montessori believed that community service contributed to a child's strong sense of relatedness to school and community, so our students, 3-years-old to 6th grade, chose to investigate the community service interest of service animals. We were pleased to welcome several visitors who introduced us to their animals as well as the research that is being done to help injured animals.

Dr. Albert Nuñez, a research veterinarian, shared information about how

he assists injured animals, who are unable to walk, with his radio wave therapies. He described research which included the fourth phase of water. He displayed several tools and x-rays to actively engage our students while he explained how they are used in his practice.

Keith, a service dog trained by Canine Companions, brought along his human companion, Linda. We learned all the special things Keith does to help Linda with her daily life, such as doing her laundry, getting food out of the refrigerator, and much, much more.

Finally, we welcomed Boscoe, a police dog with the Maitland Police Department. We saw how Boscoe interacts with his handler, Officer DiBassi, and the equipment used to help Boscoe do his job.

Our students collected items to donate to Pet Rescue by Judy, brought treats for Boscoe, and raised funds for Canine Companions.



St. James Cathedral School

PRINCIPAL MRS. GERRI GENDALL

St. James Cathedral School's Odyssey of the Mind Teams competed and placed at the regional competition. Odyssey of the Mind is an international educational program that provides creative problem-solving opportunities for students. Our Division II Team came in First Place and is moving on to the State Competition next month. The students competed in the Silent Movie Problem using music played on a team-created instrument & creatively displayed subtitles to convey its story to the audience and judges. Congratulations to Paola Briceno, Sophia Lotz, Gretchen March, Beatrice Poulin, Colleen Roche, Mai-ly Thompson, and Coach Theo Lotz. Our Division I Team came in Third Place in the Regional Competition. Good work Tristen Carbonell, Ben Greeno, Petey Lopez, Luke Prather, Joey Toscano, Kate Watson, and Coach Eric Greeno.

Congratulations to our SJCS Middle School students, Aaron Beard & Christian Stanfill, who qualified for the National History Bee in Louisville, Kentucky. Christian Stanfill was also named as a Florida National Geographic State Bee Semifinalist by National Geographic Society. We are so proud of our students & grateful for our fabulous faculty!

Athletics Updates

Congratulations to the St. James third grade Catholic Youth Sports Boys Flag Football team! The team just completed an undefeated season and won the Division Championship. Our Boys Varsity Basketball Team won the Diocesan Championship game! Congratulations Panthers on outstanding seasons!

Come and be part of an exciting summer of fun and learning at St. James for our SPORTS & ENRICHMENT SUMMER PROGRAM. We offer an organized summer program to enrich children's social and life skills. Invite your friends and neighbors to a fun and exciting summer! We ensure children a safe and secure environment all summer long. The program limits each class to 16 students and it is staffed with full-time professionals and counselors.

We start every day with a prayer and thank God for the opportunity to come together to learn and we look forward to each and every new adventure that awaits us. Join us for our Open House on Wednesday, April 30 at 8:30 a.m. For further information about our Blue Ribbon School, please call 407-841-4432 or visit our web site www.stjcs.com.



Winter Park High School

PRINCIPAL TIM SMITH

World Champs!

Congratulations to the Winter Park High School Cheerleading Team for achieving the highest level of accomplishment in their sport. The cheerleaders took first place in all of their competitions this year. For the first time in the history of this storied program, the team won the Metro Conference Championship, the State Regional Championship, the State Championship, the National Championship, and the World Championship! The Wildcat cheerleaders are a dedicated, hardworking group of girls, and they are outstanding in their athleticism, team work, character, and representation of Winter Park High School. Congratulations to Head Coach Angela Austin, her coaching staff, and the Wildcat cheerleaders on their elite achievements! Winter Park High School is extremely proud of this stellar team who has made history. Go Cats!

A legacy of leaders for over 45 years.

Since 1968, Park Maitland has been growing the leaders of tomorrow. We offer a proven foundation of excellence in education and provide children the tools they need to realize their dreams!

BETH LITTLEFORD

Current: Comedic Actor • Star on Disney hit TV show, "Dog With a Blog"
Original female correspondent on "The Daily Show with Jon Stewart"
Actor, "Crazy Stupid Love"... and much more!

Education: Swarthmore College/The New School, NYC. Graduated from Park Maitland in 1980.

Park Maitland School

407-647-3038 ParkMaitland.org



Students from St. James Cathedral School participated in Odyssey of the Mind, an international educational program that provides creative problem-solving opportunities for students. Their Division II Team came in First Place and is moving on to the State Competition next month.

COMMUNITY CALENDAR

Audubon Park Garden District Events

Ongoing Events

Every Monday night Community Market – 6:00 to 10:00 p.m. at Stardust Coffee parking lot located at 1842 E. Winter Park Rd. For information call 407-590-8776.

Baldwin Park, College Park and Orlando Area Events

Ongoing Events

Every Monday Smarty Pants - 10:15 a.m. Storytime for children ages birth-5 years old at the Edgewater Branch Library located at 5049 Edgewater Dr. For more information call 407-835-7323.

Every Wednesday Belles and Beaus Dance Club has dances every Wednesday from 7:00 to 9:30 p.m. at the Marks Street Recreation Complex located at 99 E. Marks Street. Join in for an evening of fun and dancing to music by the Soft Touch band. Refreshments are available. Singles and couples are welcome. Cost: \$5.00 per person. For more information please call 407-277-7008.

Every Thursday College Park Farmers' Market – 5:00 to 9:00 p.m. located at 1600 Edgewater Dr. For information call 407-999-5251.

Every Sunday Downtown Orlando Farmers' Market – 10:00 a.m. to 4:00 p.m. at Lake Eola. For more information call 407-246-3625.

Monday - Friday Each Week Seniors' Program in College Park – 9:00 a.m. to 1:00 p.m. at the College Park Community Center located at 2393 Elizabeth St. For information call 407-246-4361.

First Friday of Each Month The Art Stroll of Ivanhoe Village – 6:00 to 9:00 p.m. on Orange Ave. between Princeton and New Hampshire.

Third Thursday of Each Month Eunice's Healthy Cooking and Baking Workshop – 10:30 a.m. at the Edgewater Branch Library located at 5049 Edgewater Dr. Food samples will be provided. For more information and to register please call 407-835-7323.

Now Through May 9, 2015 - Vintage Flea Market - 8:00 a.m. - 3:30 p.m. at 2000 Alden Road. For more information please visit www.thecarouselemporium.net.

April 23, 2015 - 5th Annual Chairs 4 Charity Event - 6:00 a.m. - 10:00 p.m. hosted by The Mustard Seed of Central Florida at the Orlando Museum of Art. This event features 10 local artists who will use chairs as their canvas, and includes a live auction, live music, food and open bar. For more information and tickets please call 407-875-2040, or visit www.mustardseedfla.org.

April 29, 2015 - The Talako Indian Dancers and Florida School for the Deaf and the Blind performing groups - 7:00 p.m. with doors open at 6:30 at the Boone High School Auditorium located at 2000 S. Mills Ave. Admission and parking are free. For more information please call 407-352-1163.

May 2, 2015 - 3rd Annual Free Movie Night in the Park - 8:00 p.m. with the showing of "Monty Python and the Holy Grail" in Loch Haven Park. For more information please visit www.orlandoshakes.org, or call 407-447-1700, ext. 1.

May 7, 2015 - The Orange County Retired Educators Meeting - Noon at College Park United Methodist Church, 644 W. Princeton St. for their Spring Luncheon and Installation of Officers. Cost is \$14 per person. For reservations, please call 407-644-7092. Anyone who has worked in education is invited to join.

Maitland Events

Ongoing Events

Every Sunday Maitland Farmers' Market at Lake Lily

Every Tuesday Preschool Stories 10:30-11:30 a.m. at the Maitland Public Library located at 501 S. Maitland Ave.

Every Thursday Healthy Maitland Walk 6:30 a.m.; **Babytime** 10:30 to -11:30 a.m. and **Adventures w/Books Club** 2:30 to 4:30 p.m. at the Maitland Public Library.

April 11 - 12 2015 Maitland Spring Festival of the Arts 9:00 a.m. to 5:00 p.m. on Saturday and 10:00 a.m. to 4:00 p.m. Sunday at Lake Lily. For more information, please visit www.maitlandspringartsfestival.com.

Winter Park Events

Ongoing Events

Every Monday "Sit-to-Be-Fit" Chair Exercise Class – 10:15 a.m. at the Winter Park Community Center. This free class is designed for all ability levels and sponsored by the City of Winter Park. For more information please call 407-754-6190.

Monday - Friday "Art in Chambers" exhibit – Monday through Friday from 8:00 a.m. to 5:00 p.m. This free exhibit is on display at the City Hall Commission Chambers located at 401 Park Avenue South.

Every Tuesday and Thursday "Hands-on Gardening" – 9:30 a.m. – noon at the Albin Polasek Museum & Sculpture Gardens. For more information regarding this free year-round event please call 407-647-6294.

Every Tuesday and Thursday Beginning Pilates Class – 5:15 p.m. at the Winter Park Community Center. For more information please call 407-671-9599.

Every Tuesday, Friday and Saturday Winter Park Benefit Shop – The shop is located at 140 West Lyman Avenue and is open from 9:30 a.m. - 1:00 p.m. on Tuesdays and Fridays, and from 10:00 a.m. - 1:00 p.m. on Saturdays. Donate or purchase clothing, bedding, jewelry, kitchenware and more. Proceeds benefit various children's programs and the local branch of Orlando Blind. For more information please call 407-647-8276.

Every Thursday Walk With A Doc – Enjoy a rejuvenating 30-minute walk with Florida Hospital physicians. This free event is held at 5:30 to 6:30 p.m. at the Crosby YMCA. For more information, or to reserve your spot, please call 407-303-1700.

Every Tuesday and Thursday Curator Tours of Louis Comfort Tiffany's Laurelton Hall – From 11:00 a.m. to 2:30 p.m. at the Charles Hosmer Morse Museum of American Art located at 445 N. Park Ave. Space is limited and free with museum admission. To learn more about this event with Curator Donna Climenhage please call 407-645-5311 or visit www.morsemuseum.org.

Every Wednesday Mills50 MidWeek Group Runs – 6:00 p.m. at Track Shack located at 1104 N. Mills Ave. This event is free to runners of all abilities. For more information please visit www.TrackShack.com.

Every Friday through April Friday Nights at the Morse - 4:00 p.m. - 8:00 p.m. at the Charles Hosmer Morse Museum of American Art located at 445 N. Park Ave. This event offers free admission to the galleries. For more information please visit www.morsemuseum.org.

Every Saturday Winter Park Farmers' Market – 7:00 a.m. to 1:00 p.m.

Every Saturday Line Dance Class – 10:00 a.m. at the Winter Park Community Center. Beginners are asked to come at 9:30 a.m. to learn the basic steps. For more information please call 407-592-7835.

Every Sunday Music at the Casa – This free event featuring professional musicians and performers is hosted at Casa Feliz every Sunday from noon – 3:00 p.m. For more information call 407-628-8200 ext. 3 or visit www.casafeliz.us.

April 3-5 Easter Weekend Open House at the Morse Museum - Friday, 9:30 a.m. to 8:00 p.m. (with classical guitarist Joshua Englert from 5:00 p.m. to 8:00 p.m.); and a curator tour of Louis Comfort Tiffany's Laurelton Hall at 7:00 p.m.); Saturday, 9:30 a.m. to 4:00 p.m.; and Sunday, 1:00 p.m. to 4:00 p.m. For more information please visit www.morsemuseum.org.

April 4 61st Annual Easter Egg Hunt – 9:30 a.m. in Central Park West Meadow. For more information please visit www.cityofwinterpark.org.

April 7 Good Morning Winter Park – 7:45 a.m. to 9:00 a.m. at the Winter Park Welcome Center located at 151 W. Lyman Ave. Each month attracts a key speaker to provide a new perspective on an important

APRIL HIGHLIGHT



8:00 p.m., Saturday, May 2

Free Movie Night at Loch Haven Park

"Monty Python and the Holy Grail" in Loch Haven Park.

For more information please visit www.orlandoshakes.org, or call 407-447-1700, ext. 1.

community issue. Event includes complimentary continental breakfast and is free and open to the public. Topic: UCF Downtown Update. Details at www.winterpark.org.

April 11 Annual Great American Cleanup – 8:00 a.m. to 11:00 a.m. at Dinky Dock on Lake Virginia. This annual event is hosted by Keep Winter Park Beautiful (KWPB) in preparation of Earth Day, and volunteers are encouraged to register at www.cityofwinterpark.org/kwpb.

April 11 American Association of University Women's (AAUW) meeting – 9:00 at the First Congregational Church Fellowship Hall located at 225 S. Interlachen Ave. The public is invited. Admission is \$15 and includes breakfast. For more information please call 407-488-4163.

April 15 Taste of Winter Park – 5:00 to 8:00 p.m. at the Winter Park Farmers' Market located at 200 W. New England Ave. Event includes food and beverage samples from more than 40 local eateries, plus live entertainment. Cost is \$40 for chamber members in advance and \$45 non-members and all at the door. Tickets online at www.winterpark.org.

April 19 - 25 Winter Park Paint Out 2015 – The Albin Polasek Museum & Sculpture Gardens is free and open to the public all week. Twenty five plein air artists will be creating original works throughout the city of Winter Park. The Paint Out Garden Party will be held on April 25 from 6:00 to 9:00 p.m. and guest can discuss and purchase their works. For more information please visit www.polasek.org or call 407-647-6294.

April 23 - 25 Night On Broadway "Once Upon A Time" – All three shows are at 7:30 p.m. at the WPHS Ann Derflinger Auditorium. The cast of over 250 chorus students will perform selections from a host of Broadway musicals, bringing alive the themes of beloved fairytales. Proceeds benefit the Tyler Rush Memorial Scholarship Fund. For more information please call 407-628-3028 or email: NOBTICKETS@aol.com

April 25 Run For The Trees Jeannette Genius McKean Memorial 5K – 7:30 a.m. at Showalter Field located at 2525 Cady Way. This run/walk 5K includes a free kids run, and each participant receives a young tree. Proceeds from this event benefit the Winter Park Tree Replacement Fund. For more information, or to register, call 407-896-1160 or visit www.trackshack.com.

The Park Press

Winter Park | Baldwin Park | College Park | Audubon Park | Maitland

CHECK OUT OUR
PRINTER-FRIENDLY CALENDAR AND MORE...

www.TheParkPress.com



Transform.

Located in the heart of Central Florida's tourism industry, the Rosen College of Hospitality Management leverages location-based education to meet the needs of its students and industry partners. It's no wonder that nearly 90 percent of Rosen College undergraduates secure jobs — even before graduating.

.....
To learn more about how Orlando's hometown university is changing the landscape of the city, region and state, visit ucf.edu/partnerships.

Think **UCF.**